

OREGON CORNER RESTORATION FORM

Section 1 Township 4 N Range 34 E

County Umatilla Date 1-27-88

E-25

CORNER DESIGNATION

- Condition Report Only
- Not Found
- Renewed
- Unrecorded
- Surveyed In
- Referenced Out

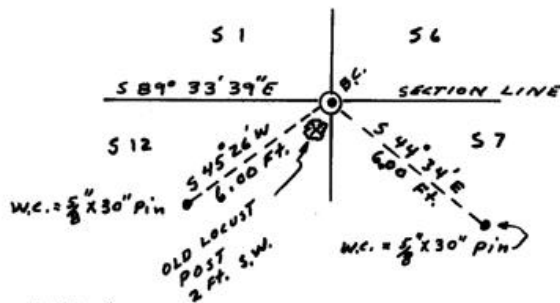
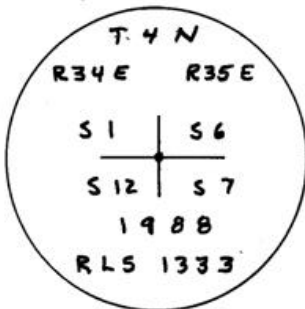
Previous Renewals/Surveys, etc. Originally post, pits, and mounds (1865)

Monument(s) & Accessories Found: (Condition and Source)

Found a very old Locust fence post in an old fence line and plowline running east and west marking the section corner location. This post lines up with roads and fence lines several miles to the south.

Monument Detail

Sketch



Monument Set (Procedures and Description)

Set 1\"/>

New Accessories

A witness monument bears S. 45° 26' W = 6.00 feet
A witness monument bears S 44° 34' E = 6.00 feet

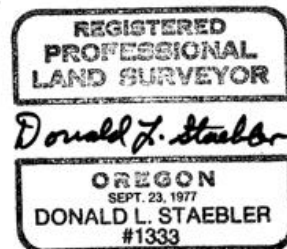
Witness monuments are 5/8\"/>

Location & Comments

Corner is located in old fence line and
plowline running
E. and W.

Compass Declination _____
Firm/Agency Don Staebler
Engineer - Surveyor
Address 1532 S. W. 41st
Pendleton, OR 97801
Party Chief Don Staebler

Surveyor's Seal



RECEIVED BY _____

Umatilla County Surveyor

Date 2-88

Rec'd By KA

No. 88-9-A

Notes _____

Witness _____