

OREGON CORNER RESTORATION FORM

Section 05, 06 Township 4N Range 31E  
 County Umatilla Date: 05-08-2006

Corner Designation: 4N31E A5

Condition Report Only  
 Not Found  
 Remonumented  
 Unrecorded  
 Surveyed In  
 Referenced Out

Previous Renewals / Surveys, etc.

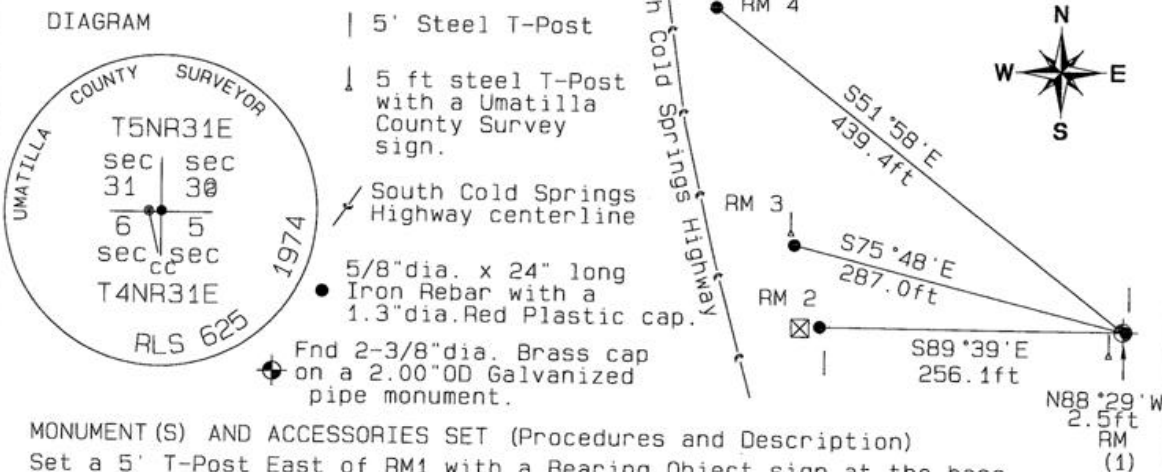
08-1865 W.Odell/Lewis STD PARALLEL (110) "Set post Standard corner for Sec 31 & 32. Drove charred Stake and Raised Mound with pits as per instructions."  
 01-1867 W.Odell GLO Subdv (114) "Intersected 1st Standard parallel North 77 links West of Post Standard corner for sections 31 & 32 T5N R31E. At point of intersection set Closing corner for sections 5 + 6 drove charred stake dug pits, and raised mound as per instructions." ---SUBDIVISION OF T4NR31E---  
 10-1907 J.Kimbrell (#256) Book 2, page 62 "Set Stone 16x8x6 inches West of this Standard 70 lks dist for cc to sec 5&6."

\* \* Note: T5NR31EZ5 corner referred by the following surveys is found to be the closing corner for T4NR31EA5. (see filed corner certification) \* \*

05-1974 D.Krumbein (I-25-B) "FND FENCE COR SET BRASS CAP"  
 06-1974 D.Krumbein (I-24-B) "FND FENCE COR SET BRASS CAP"  
 06-1974 D.Krumbein (I-167-B) "FND FENCE COR SET BRASS CAP"  
 05-1980 W.Kimmel BLM (83-195-B) "...monumented with an iron post, 2 ins. diam., firmly set, projecting 6 ins. above ground, with brass cap mkd."  
 05-2006 D.Haddock (06-263-C) "Found Brass cap".

Monument and Accessories Found: ( condition and source )

Searched for and did not find stone or fence post. Found 2-3/8 dia Brass Capped monument on a 2" dia Iron pipe 2 ins. above ground and leaning 15° South. \*10-2006 Stamped cap correction\*



MONUMENT(S) AND ACCESSORIES SET (Procedures and Description)

Set a 5' T-Post East of RM1 with a Bearing Object sign at the base.  
 Set a 5 ft steel T-Post with a Umatilla County Survey Marker sign facing Southwest toward South Cold Springs highway.  
 (11-2006 : Stamped BC w/ center mark, cc and line, and corrected sec no.)

REFERENCES SET:

Set four (5/8" dia x 24" long Iron rebar with a 1.3" dia. Red Plastic cap) to the bearings and distances from monument shown above in the sketch.

Made GPS tie to TRI Stations LAURILA RESET RB 1379 and WALLS RB 1396  
 Oregon State Plane Coord. - North Zone  
 Northing 804539.15  
 Easting 8590701.61  
 Latitude 45°51'48.026317"N  
 Ortho Height 1166.29  
 Longitude 118°58'28.393908"W  
 Ellipsoidal Height 1028.40  
 NAD 83(1991)

Location and Comments  
 Compass Declination 18°E

Surveyors Seal

Proceed from the Jct of Hwy 37 and South Cold Sprngs Highway 2.00 miles South East on South Cold Springs Highway. Corner is North of the Highway 275 feet up the plowed field. Mile-post 23-1/4.

REGISTERED PROFESSIONAL LAND SURVEYOR

David L. Haddock

RECEIVED BY:

Firm / Agency

Date: 05-06  
 Rec'd By: *DHL*  
 No.: 06-263-C

Haddock Surveying  
 P. O. Box 1574  
 Pendleton, OR 97801  
 (541) 276-2174

OREGON  
 JULY 12, 1968  
 DAVID L. HADDOCK  
 852

RENEWS 6-30-07

07-199-R