

OREGON CORNER RESTORATION FORM

SECTION 25 TOWNSHIP 4 NORTH RANGE 29 EAST R-25
 COUNTY : UMATILLA DATE 11-2001

CORNER DESIGNATION

NE CORNER

- CONDITION REPORT ONLY
- NOT FOUND
- RENEWED
- UNCOVERED
- SURVEYED IN
- REFERENCED

PREVIOUS RENEWALS / SURVEYS, ETC.

ORIGINALLY SURVEYED IN 1860 BY CAMBELL UNDER CONTRACT #95. HE SET A POST IN A MOUND OF EARTH AND A CHARRED STAKE.

IN 1998 EDWARDS SET A 1"X30" IRON PIPE WITH A 2 3/8" BRASS CAP BY SINGLE PROPORTION.

MONUMENTS AND ACCESSORIES FOUND: CONDITION AND SOURCE

FOUND A 2 3/8" BRASS CAP ON A 1" IRON PIPE STAMPED AS BELOW.
 FROM WHICH:

AN ALUMINUM TAG #951 IN POWER POLE BEARS S 13°28'24" W 61.71 FEET.

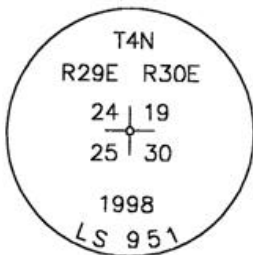
AN ALUMINUM TAG #951 IN BRACE POLE BEARS S 20°16'30" W 63.37 FEET.

AN ALUMINUM TAG #951 IN POWER POLE BEARS S 57°30'29" W 24.75 FEET.

A 5/8"X30" IRON REBAR WITH PLASTIC CAP #951 BEARS S 89°55'48" W 20.80' FEET.

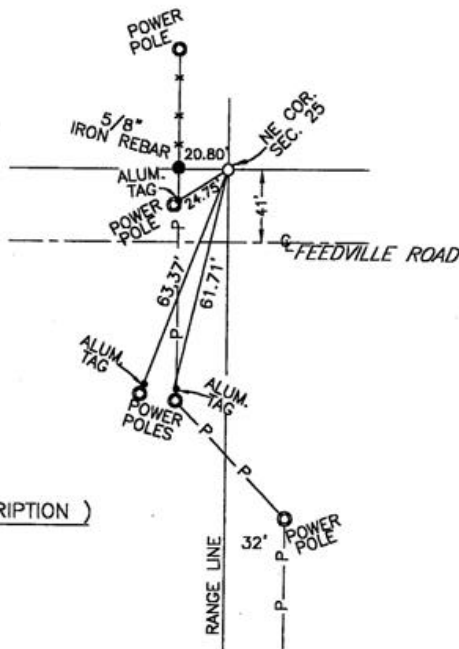
SKETCH

MONUMENT DETAIL



NAD 83/91
 OREGON STATE PLANE
 INTERNATIONAL FEET
 783084.1259
 8553473.3648

MONUMENT SET (PROCEDURES AND DESCRIPTION)



NEW ACCESSORIES FROM WHICH

LOCATION AND COMMENTS
 AT THE INTERSECTION OF
 FEEDVILLE ROAD AND A LARGE
 POWER LINE.

COMPASS DEC.

FIRM/AGENCY
 EDWARDS SURVEYING
 P.O. BOX 763
 HERMISTON, OREGON 97838

PARTY CHIEF
 D. EDWARDS

NOTES

WITNESS
 CURTIS J FAVOREL

RECEIVED BY

Umatilla County Surveyor

Date 12-01

Rec'd By KR

No. 01-213-9

SURVEYOR'S SEAL

REGISTERED
 PROFESSIONAL
 LAND SURVEYOR

G. Dennis Edwards

OREGON
 JULY 16, 1971
 G. DENNIS EDWARDS
 9 5 1
 RENEWS 12/31/2001