

OREGON COUNTY REBAR RESTORATION FORM

Section 02.35 Township 5N Range 30E
 County Umatilla Date: 09-13-2006

Corner Designation: 5N30E Z19

_____	Condition Report Only
<u> X </u>	Not Found
_____	Remonumented
_____	Unrecorded
<u> X </u>	Surveyed In
<u> X </u>	Referenced Out

Previous Renewals / Surveys, etc.

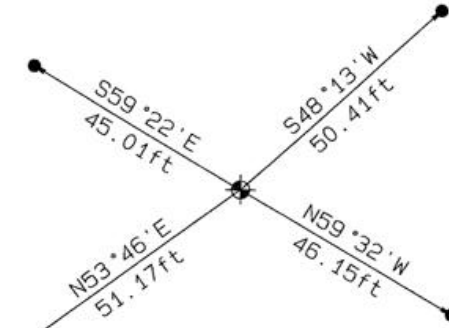
02-1860 H.Maxon/J.Hurd STD PARALLEL (50) "Set post for 1/4 Sect. corner in mound of earth, trench & pits as per instructions."

05-1974 D.Krumbein (I-25-B) East - West Bearing and Distance across.

Monument and Accessories Found: (condition and source)
 Post not found. Location in plowed field.



DIAGRAM



Monument and RM's buried 24" below surface of the ground.

● 5/8" dia. x 30" long Iron Rebar with a 1.3 dia. red plastic cap.

⊙ Set 2-3/8" dia. Brass cap on a 1-1/2" x 24" long Galvanized pipe monument.

MONUMENT (S) AND ACCESSORIES SET (Procedures and Description)

Set a 2-3/8" dia. Brass Capped monument (stamped as shown) on a 1-1/4" ID x 30" long galvanized pipe 24" below the ground surface.

REFERENCES SET:

Set four (5/8" dia x 30" long Iron rebar with a 1.3" dia. red plastic cap) 24" below the surface of the ground to the bearings and distances from monument shown above in the sketch.

Made GPS tie to TRI Stations LAURILA RESET RB 1379 and WALLS RB 1396
 Latitude 45°51'50.27113"N
 Longitude 119°01'35.38681"W
 NAD 83 (1991)

Oregon State Plane Coord. - North Zone
 Northing 804507.01
 Easting 8577469.04
 Ortho Height 1007.63
 Ellipsoidal Height 938.40

Compass Declination 18°E

Location and Comments

Proceed 2.1 miles South on Umatilla County Road 1172 (KOSMOS ROAD) . Thence South along access road 0.41 miles to a rivine East Thence 0.46 miles East to the corner.

Surveyors Seal

REGISTERED PROFESSIONAL LAND SURVEYOR

RECEIVED BY:

Firm / Agency

Date: 02-07
 Rec'd By: OHK
 No.: 07-197-R

Haddock Surveying
 P. O. Box 1574
 Pendleton, OR 97801
 (541) 276-2174

David L. Haddock
 OREGON
 JULY 12, 1968
 DAVID L. HADDOCK
 852

RENEWS 6-30-07