

CORNER RESTORATION FORM

Township 4N Range 29E Section 31, 32 County UMATILLA

State OREGON Date 3/30/2023 Number X-5

Condition Report Only

Corner Designation : 1/4 CORNER: 31, 32

Not Found
 Renewed

Previous Renewals ORIGINAL SOURCE OF CORNER

Surveyed In
 Referenced

ORIGINALLY SURVEYED IN 1861 BY DAVENPORT UNDER

CONTRACT #101, HE SET A STAKE IN MOUND OF EARTH

MONUMENT DETAIL

1949 FRALEY SET A 1" I.R. COUNTY SURVEY NO. Q-695-AX

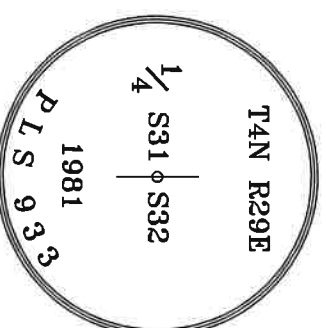
Found Set

1980 KRUMBEIN REPLACED 1" I.R. WITH A BRASS CAP COUNTY

SURVEY NO. S-158-C

BASIS OF BEARINGS, NAD 83/91 OREGON STATE PLANE
 COORDINATES NORTH ZONE:

NORTHING: 7744568.27
 EASTING: 8527197.17



Monument & Accessories Set/Found (Procedure and Description)

AT CORNER FOUND 2 3/8" BRASS CAP & UMATILLA MON. SIGN, COUNTY SURVEY NO. S-158-C

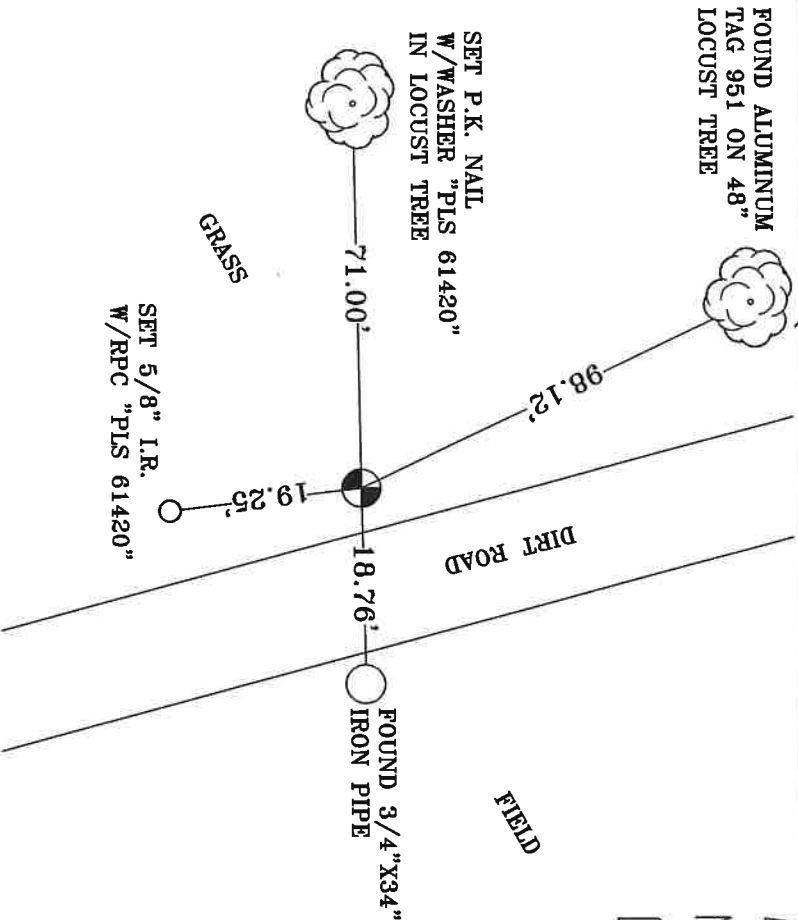
FOUND A ALUMINUM TAG 961 ON A 48" LOCUST TREE N 25°05' W 98.12', CORNER FORM NO. X5-95-60-B

FOUND A 3/4"X3/4" IRON PIPE N 88°58' E 18.76', CORNER FORM NO. X5-95-60-B

SET A 5/8" I.R. W/RPC "PLS 61420" 2" BELOW GRADE S 06°46' E 19.25'

SET A P.K. NAIL W/WASHER "PLS 61420" IN LOCUST TREE S 88°54' W 71.00'

Sketch of Monument, Accessories and General Area



**REGISTERED
 PROFESSIONAL
 LAND SURVEYOR**

OREGON
 MAY 10, 2011
 LANCE CLARK KING
 61420

RENEWALS: 6/30/2023

Agency: **CK3, LLC**
 945 W. ORCHARD
 HERMISTON OREGON 97838
 OFFICE: 541-567-2345
 FAX: 541-567-2305
 WEB: CK3LLC.NET
 Field Book # 0-350

COUNTY SURVEYOR
 RECORDING INFO

Received CT

Filed 5/4/23

Survey No. 23-042-C

Drawing No. _____

Index No. X-5