

# OREGON CORNER RESTORATION FORM

SECTION 33 TOWNSHIP 4 NORTH RANGE 29 EAST

X-11

COUNTY : UMATILLA DATE 02/02

CORNER DESIGNATION

1/4 CORNER

CONDITION REPORT ONLY

NOT FOUND

RENEWED

UNCOVERED

SURVEYED IN

REFERENCED

PREVIOUS RENEWALS / SURVEYS, ETC.

IN 1996 ROBERTS SET A 5/8" x 30" REBAR WITH A YELLOW PLASTIC CAP.

MONUMENTS AND ACCESSORIES FOUND: CONDITION AND SOURCE

AN ALUMINUM TAG IN A POWER POLE LIES N 38°49'34" E, 21.73 FEET.

AN ALUMINUM TAG IN A LARGE STUMP LIES S 40°02'51" E, 21.03 FEET.

AN ALUMINUM TAG IN A T-POST LIES N 44°26'26" W, 29.07 FEET.

MONUMENT DETAIL

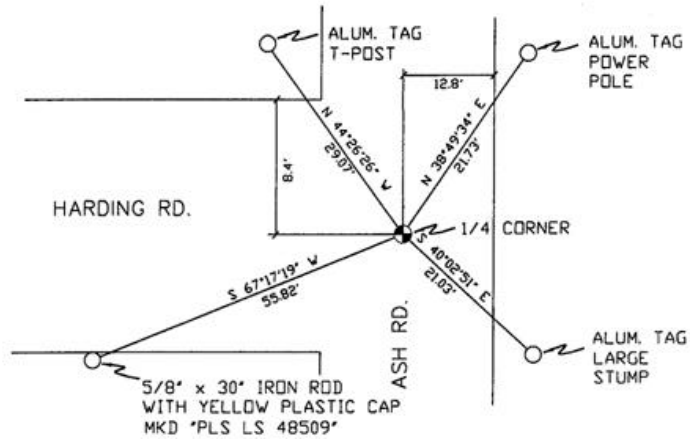


NAD 83/91  
OREGON STATE PLANE  
INTERNATIONAL FEET

774738.3093  
8535087.2465



SKETCH



MONUMENT SET ( PROCEDURES AND DESCRIPTION )

NEW ACCESSORIES FROM WHICH

A 5/8" x 30" IRON ROD WITH A YELLOW PLASTIC CAP MKD "PLS LS 48509" LIES S 67°17'19" W, 55.82 FEET.

LOCATION AND COMMENTS

AT INTERSECTION OF EAST HARDING  
AND NORTH ASH ROADS.

COMPASS DEC.

FIRM/AGENCY

PRIMM LAND SURVEYING  
P.O. BOX 1322  
HERMISTON, OREGON 97838

PARTY CHIEF

KEITH P. PRIMM

NOTES

WITNESS

BRIT L. PRIMM

SURVEYOR'S SEAL

REGISTERED  
PROFESSIONAL  
LAND SURVEYOR

*Brit L. Primm*

OREGON  
JULY 13, 1999  
BRIT L. PRIMM  
48509

EXPIRATION DATE:12/31/02

03-52-9