

CORNER RESTORATION FORM

Township 4N Range 29E Section 20, 29 County UMATILLA

State OREGON Date 3/30/2023 Number R-7

Corner Designation : 1/4 CORNER: 20, 29

Previous Renewals ORIGINAL SOURCE OF CORNER

ORIGINALLY SURVEYED IN 1861 BY DAVENPORT UNDER

CONTRACT #101, HE SET A STAKE IN MOUND OF EARTH

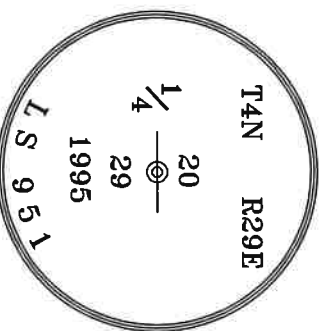
1995 EDWARDS SET A 5/8" I.R. W/2" ALUMINUM CAP BY

SINGLE PROPORTION COUNTY SURVEY NO. 95-060-B &

CORNER FORM NO. R7-95-060-B

BASIS OF BEARINGS, NAD 83/91 OREGON STATE PLANE
COORDINATES NORTH ZONE:

NORTHING: 782512.19
EASTING: 8529701.92



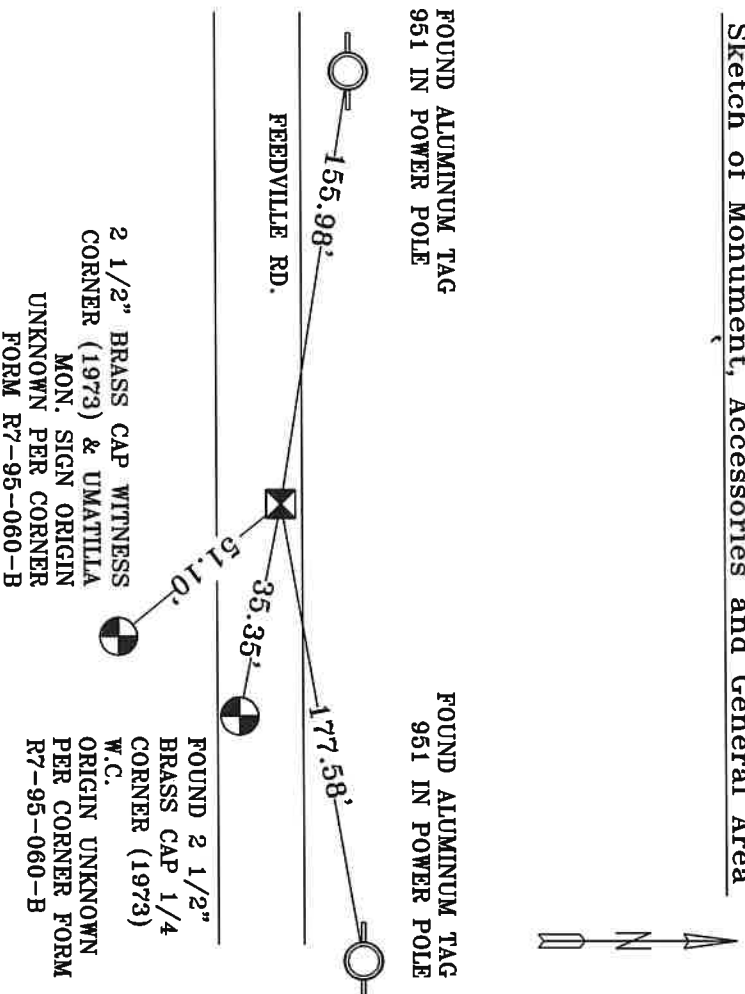
MONUMENT DETAIL

Found Set

Monument & Accessories Set/Found (Procedure and Description)

AT CORNER FOUND 2" ALUM. CAP 0.5" BELOW PAVEMENT, RESTAMPED/REFRESHED MON., COUNTY SURVEY
95-060-B, & CORNER FORM NO. R7-95-060-B
FOUND A 2 1/2" BRASS CAP 1/4 COR. (1973) AND MARKED W.C. 0.5" BELOW PAVEMENT, ORIGIN UNKNOWN
PER CORNER FORM R7-95-060-B, S 78°50' E 35.35'
FOUND A 2 1/2" BRASS CAP WITNESS COR. (1973) & UMATILLA MON. SIGN, ORIGIN UNKNOWN PER
CORNER FORM R7-95-060-B, S 39°04' E 51.10'
FOUND A ALUMINUM TAG IS 951 IN POWER POLE N 80°00' E 177.58', CORNER FORM NO. R7-02-48-G
FOUND A ALUMINUM TAG IS 951 IN POWER POLE N 81°00' W 155.98', CORNER FORM NO. R7-02-48-G

Sketch of Monument, Accessories and General Area



**REGISTERED
PROFESSIONAL
LAND SURVEYOR**

Lance Clark King
OREGON
MAY 10, 2011
LANCE CLARK KING
61420

RENEWALS: 6/30/2023

Agency: **CK3, LLC**
945 W. ORCHARD
HERMISTON OREGON 97838
OFFICE: 541-567-2345
FAX: 541-567-2305
WEB: CK3LLC.NET
Field Book# 0-350

**COUNTY SURVEYOR
RECORDING INFO**

Received CT
Filed 5/4/23
Survey No. 23-042-C
Drawing No. _____
Index No. R-7