

# CORNER RESTORATION FORM

Township 4N Range 29E, 30E Section 19,24,25,30 County UMATILLA

State OREGON Date 3/30/2023 Number R-25

Condition Report Only

Corner Designation : SECTION CORNER: 19, 24, 25, 30

Not Found

Previous Renewals ORIGINAL SOURCE OF CORNER

Renewed

CONTRACT #95, HE SET A STAKE IN MOUND OF EARTH

Surveyed In

1975 PALMER SET A BRASS CAP COUNTY SURVEY NO.

Referenced

03-272-C

1998 EDWARDS SET A 1"X30" I.P. W/2 3/8" BRASS CAP BY

## MONUMENT DETAIL

DOUBLE PROPORTION COUNTY SURVEY NO. 98-213-C &

Found

Set

CORNER FORM NO. R25-98-213-C

2019 KING SET A 5/8" I.R. W/PLASTIC CAP "PLS 61420"

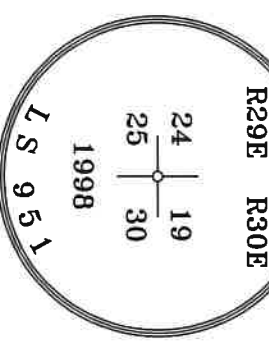
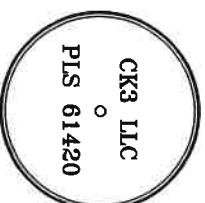
"SURFACE MON."

"BRASS MON."

CAP COUNTY SURVEY NO. 19-078-B

BASIS OF BEARINGS, NAD 83/91 OREGON STATE PLANE

NORTHING: 783084.17  
EASTING: 8553473.51



Monument & Accessories Set/Found (Procedure and Description)

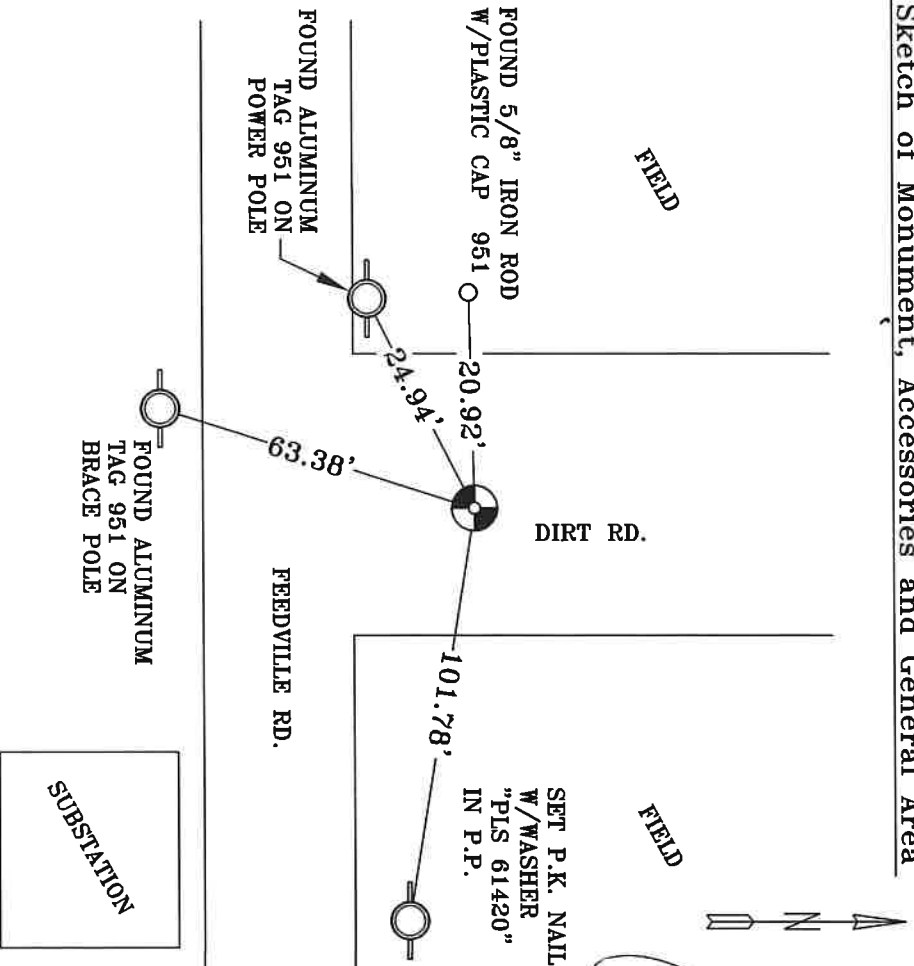
AT CORNER FOUND A 5/8" I.R. W/RPC "PLS 61420" 2" BELOW GRADE AS SURFACE MONUMENT OVER EXISTING BRASS CAP 2.5' BELOW GRADE COUNTY SURVEY NO. 19-078-B

FOUND A 5/8" IRON ROD W/PLASTIC CAP #951 S 88°52' W 20.92', CORNER FORM NO. R25-98-213-C

FOUND A ALUMINUM TAG 951 ON POWER POLE & UMATILLA MON. SIGN S 55°44' W 24.94', CORNER FORM NO. R25-98-213-C

FOUND A ALUMINUM TAG 951 ON BRACE POLE S 18°38' W 63.38', CORNER FORM NO. R25-98-213-C  
SET A P.K. NAIL W/WASHER "PLS 61420" S 84°04' E 101.78'

Sketch of Monument, Accessories and General Area



**REGISTERED  
PROFESSIONAL  
LAND SURVEYOR**

OREGON  
MAY 10, 2011  
LANCE CLARKKING  
61420

RENEWALS: 6/30/2023

Agency: CK3, LLC  
945 W. ORCHARD  
HERMISTON OREGON 97838  
OFFICE: 541-567-2345  
FAX: 541-567-2305  
WEB: CK3LLC.NET  
Field Book # 0-350

COUNTY SURVEYOR  
RECORDING INFO

Received CT

Filed 5/4/23

Survey No. 23-042-C

Drawing No. \_\_\_\_\_

Index No. R-25