

CORNER RESTORATION FORM

Township 4N Range 29E Section 22, 27 County UMATILLA

State OREGON Date 3/30/2023 Number R-15

Corner Designation : 1/4 CORNER: 22, 27

Condition Report Only

Not Found

Renewed

Surveyed In

Referenced

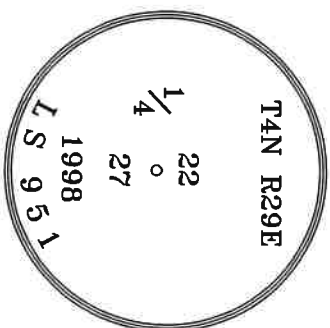
Previous Renewals ORIGINAL SOURCE OF CORNER
 ORIGINALLY SURVEYED IN 1861 BY DAVENPORT UNDER
 CONTRACT #101, HE SET A STAKE IN MOUND OF EARTH
 1998 EDWARDS SET A 1"X30" I.P. W/ 2-3/8" BRASS CAP BY
 SINGLE PROPORTION COUNTY SURVEY NO. 98-213-C &
 CORNER FORM NO. R15-98-213-C

MONUMENT DETAIL

Found Set

BASIS OF BEARINGS, NAD 83/91 OREGON STATE PLANE
 COORDINATES NORTH ZONE:

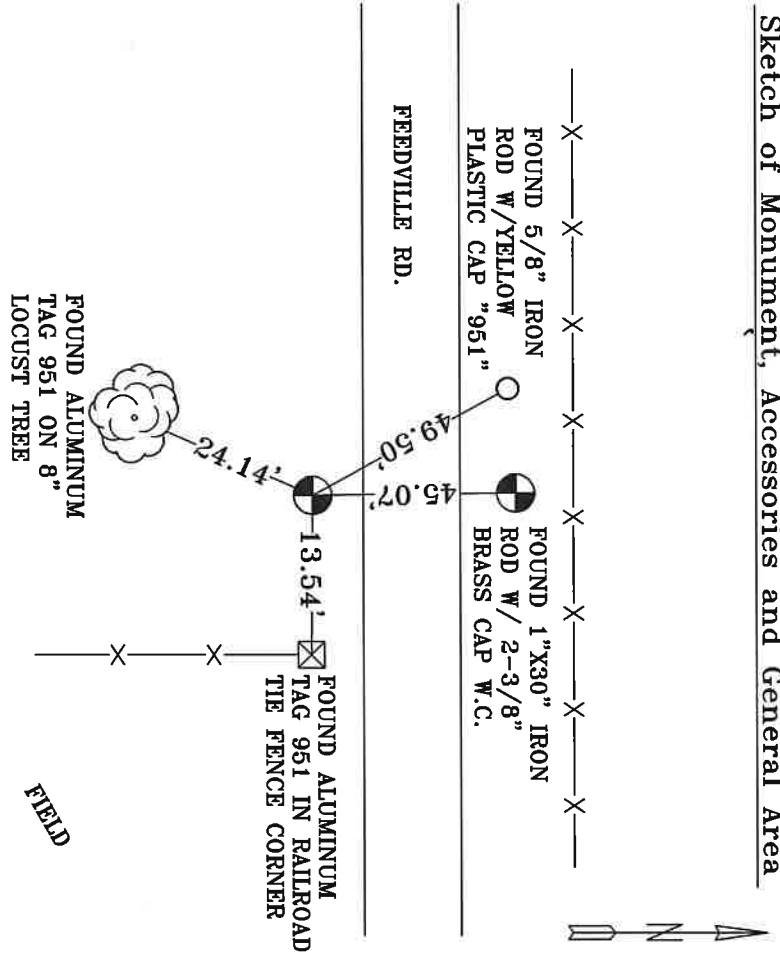
NORTHING: 782819.04
 EASTING: 8540227.81



Monument & Accessories Set/Found (Procedure and Description)

AT CORNER FOUND A 2 3/8" BRASS CAP & UMATILLA MON. SIGN, COUNTY SURVEY NO. 98-213-C & CORNER FORM NO. R15-98-213-C
 FOUND A ALUMINUM TAG 951 ON A RAILROAD TIE FENCE CORNER S 89°30' E 13.54', CORNER FORM NO. R15-98-213-C
 FOUND A 5/8" IRON ROD W/YELLOW PLASTIC CAP "951" 6" BELOW GRADE N 28°42' W 49.50', CORNER FORM NO. R15-98-213-C
 FOUND A 1"X30" IRON PIPE W/ 2-3/8" BRASS CAP W.C., N 00°39' W 45.07', CORNER FORM NO. R15-98-213-C
 FOUND A ALUMINUM TAG 951 ON 8" LOCUST TREE S 21°55' W 24.14', CORNER FORM NO. R15-98-213-C

Sketch of Monument, Accessories and General Area



REGISTERED PROFESSIONAL LAND SURVEYOR

Lance Clark King
OREGON
MAY 10, 2011
LANCE CLARK KING
61420

RENEWALS: 6/30/2023

Agency: **CK3, LLC**
 945 W. ORCHARD
 HERMISTON OREGON 97838
 OFFICE: 541-567-2345
 FAX: 541-567-2305
 WEB: CK3LLC.NET
 Field Book # 0-350

COUNTY SURVEYOR RECORDING INFO

Received CT
 Filed 5/4/23

Survey No. 23-042-C

Drawing No. _____
 Index No. R-15