

OREGON CORNER RESTORATION FORM

SECTION 22.27 TOWNSHIP 4 NORTH RANGE 29 EAST
 COUNTY : UMATILLA DATE 11/01

R-15

CORNER DESIGNATION

1/4 CORNER

X CONDITION REPORT ONLY

- NOT FOUND
- RENEWED
- UNCOVERED
- SURVEYED IN
- REFERENCED

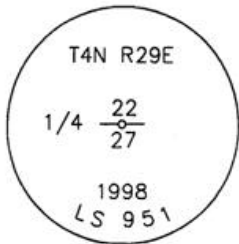
PREVIOUS RENEWALS / SURVEYS, ETC.

ORIGINALLY SURVEYED IN 1861 BY DAVENPORT UNDER CONTRACT #101. HE SET A POST IN A MOUND OF EARTH AND A CHARRED STAKE.
 IN 1998 EDWARDS SET A 1" x 30" IRON PIPE WITH A 2 3/8" BRASS CAP BY SINGLE PROPORTION.

MONUMENTS AND ACCESSORIES FOUND: CONDITION AND SOURCE

AN ALUMINUM TAG #951 ON A 8" LOCUST TREE LIES S 23°42'57" W, 24.31 FEET.
 AN ALUMINUM TAG #951 ON A R x R TIE FENCE CORNER LIES S 88°40'38" E, 13.68 FEET.
 A 5/8" x 30" IRON ROD WITH A YELLOW PLASTIC CAP MKD "#951" LIES N 27°51'58" W, 49.53 FEET.
 A 1" x 30" IRON PIPE WITH A 2 3/8" BRASS CAP LIES N 0°20'59" E, 44.81 FEET.

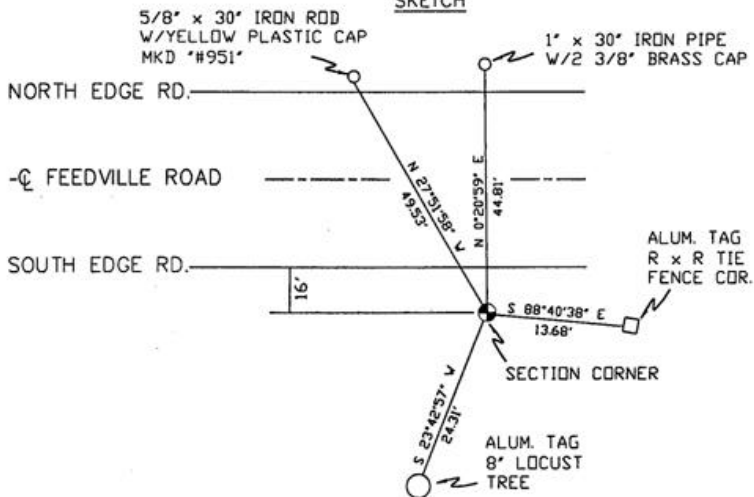
MONUMENT DETAIL



NAD 83/91
 OREGON STATE PLANE
 INTERNATIONAL FEET

782819.0619
 8540227.8289

N.T.S



MONUMENT SET (PROCEDURES AND DESCRIPTION)

NEW ACCESSORIES FROM WHICH

RECEIVED BY

Umatilla County Surveyor

Date 12-01

Rec'd By KK

01-213-9

LOCATION AND COMMENTS

FROM INTERSECTION OF EDWARDS ROAD AND FEEDVILLE ROAD GO EAST 1 1/2 MILE ON FEEDVILLE TO COR.

COMPASS DEC.

FIRM/AGENCY
 PRIMM LAND SURVEYING
 P.O. BOX 1322
 HERMISTON, OREGON 97838

PARTY CHIEF
 KEITH P. PRIMM

NOTES

WITNESS
 BRIT L. PRIMM

SURVEYOR'S SEAL

REGISTERED
 PROFESSIONAL
 LAND SURVEYOR

Brit L. Primm

OREGON
 JULY 13, 1999
 BRIT L. PRIMM
 48509

EXPIRATION DATE:12/31/02