

CORNER RESTORATION FORM

Township 4N Range 29E Section 21, 28 County UMATILLA

State OREGON Date 3/30/2023 Number R-11

Corner Designation : 1/4 CORNER: 21, 28

Condition Report Only

Not Found

Renewed

Surveyed In

Referenced

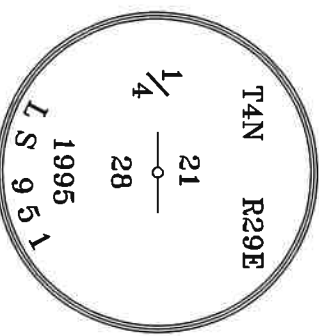
Previous Renewals ORIGINAL SOURCE OF CORNER
 ORIGINALLY SURVEYED IN 1861 BY DAVENPORT UNDER
 CONTRACT #101, HE SET A STAKE IN MOUND OF EARTH
 1995 EDWARDS SET A 5/8" I.R. W/2" ALUMINUM CAP BY
 SINGLE PROPORTION COUNTY SURVEY NO. 95-060-B &
 CORNER FORM NO. R11-95-060-B

Found Set

MONUMENT DETAIL

BASIS OF BEARINGS, NAD 83/91 OREGON STATE PLANE
 COORDINATES NORTH ZONE:

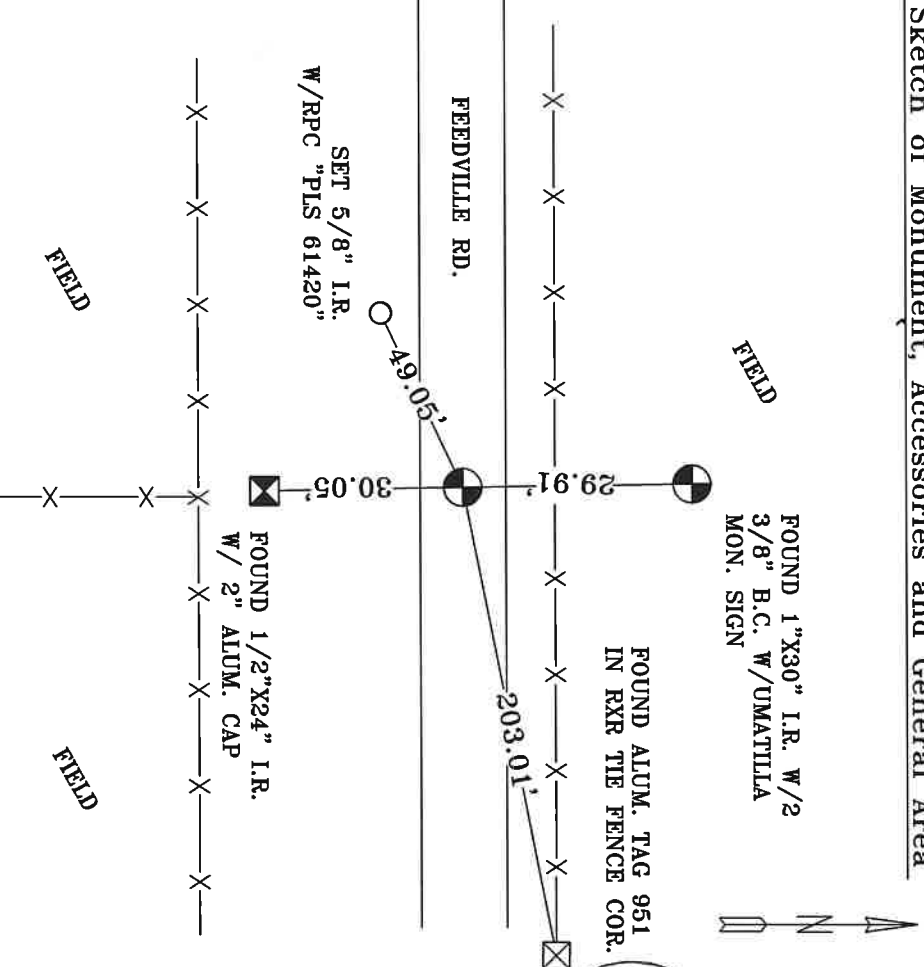
NORTHING: 782659.18
 EASTING: 8534960.79



Monument & Accessories Set/Found (Procedure and Description)

AT CORNER FOUND A 2" ALUMINUM CAP 1/2" BELOW ASPHALT, RESTAMPED/REFRESHED MONUMENT AS SHOWN,
 COUNTY SURVEY NO. 95-060-B, & CORNER FORM NO. R11-95-060-B
 FOUND A 1/2"x24" I.R. W/2"ALUM. CAP S 01°02' E 30.05', CORNER FORM NO. R11-95-060-B
 FOUND A ALUM. TAG 951 ON RXR TIE FENCE COR. N 78°54' E 203.01', CORNER FORM NO. R11-95-060-B
 FOUND A 1"x30" I.R. W/2 3/8" BRASS CAP & UMATILLA MON. SIGN N 00°50' E 29.91', CORNER FORM NO.
 R11-95-060-B
 SET A 5/8" I.R. W/RPC "PLS 61420", S 64°49' W 49.05'

Sketch of Monument, Accessories and General Area



**REGISTERED
 PROFESSIONAL
 LAND SURVEYOR**

Lance Clark King
OREGON
 MAY 10, 2011
LANCE CLARK KING
 61420

RENEWALS: 6/30/2023

Agency:
 CK3, LLC
 945 W. ORCHARD
 HERMISTON OREGON 97838
 OFFICE: 541-567-2345
 FAX: 541-567-2305
 WEB: CK3LLC.NET
 Field Book # 0-350

**COUNTY SURVEYOR
 RECORDING INFO**

Received CT
 Filed 5/4/23
 Survey No. 23-042-C
 Drawing No. _____
 Index No. R-11