

OREGON CORNER RESTORATION FORM

SECTION 21,28 TOWNSHIP 4 NORTH RANGE 29 EAST R-11
 COUNTY : UMATILLA DATE 01/02

CORNER DESIGNATION

1/4 CORNER

CONDITION REPORT ONLY

- NOT FOUND
- RENEWED
- UNCOVERED
- SURVEYED IN
- REFERENCED

PREVIOUS RENEWALS / SURVEYS, ETC.

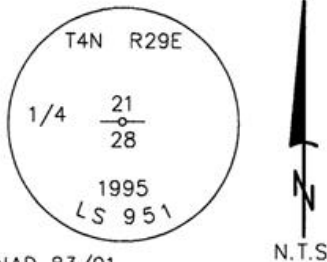
ORIGINALLY SURVEYED IN 1861 BY DAVENPORT UNDER CONTRACT #101. HE SET A POST IN A MOUND OF EARTH AND A CHARRED STAKE.
 IN 1995 EDWARDS SET A 5/8" x 30" IRON ROD WITH A 2" ALUM. CAP STAMPED AS BELOW, BY SINGLE PROPORTION.

MONUMENTS AND ACCESSORIES FOUND: CONDITION AND SOURCE

A 1" x 30" IRON ROD WITH A 2 3/8" BRASS CAP LIES N 00°04'27" E, 29.99 FEET.
 A 1/2" x 24" IRON ROD WITH ALUM. CAP LIES S 00°09'48" E, 30.00 FEET.
 AN ALUMINUM TAG #951 ON A R x R TIE FENCE COR. LIES N 79°41'32" E, 203.00 FEET.
 AN ALUMINUM TAG #951 ON A R x R TIE FENCE COR LIES N 74°43'28" W, 100.62 FEET.

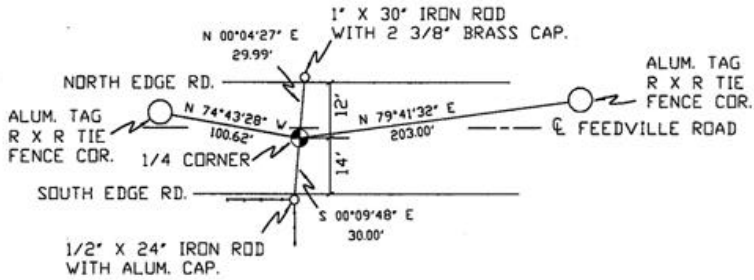
MONUMENT DETAIL

SKETCH



NAD 83/91
 OREGON STATE PLANE
 INTERNATIONAL FEET

782659.0826
 8534960.6655



MONUMENT SET (PROCEDURES AND DESCRIPTION)

NEW ACCESSORIES FROM WHICH

LOCATION AND COMMENTS

FROM INTERSECTION OF EDWARDS ROAD AND FEEDVILLE ROAD GO EAST ON FEEDVILLE ROAD 1/2 MILE TO CORNER.

COMPASS DEC.

FIRM/AGENCY
 PRIMM LAND SURVEYING
 P.O. BOX 1322
 HERMISTON, OREGON 97838

PARTY CHIEF
 KEITH P. PRIMM

NOTES

WITNESS
 BRIT L. PRIMM

RECEIVED BY

Umatilla County Surveyor

Date 2-02

Rec'd By KK

No: 02-49-g

SURVEYOR'S SEAL

REGISTERED
 PROFESSIONAL
 LAND SURVEYOR

Brit L. Primm

OREGON
 JULY 13, 1999
 BRIT L. PRIMM
 48509

EXPIRATION DATE:12/31/02