

CORNER RESTORATION FORM

Township 4N Range 28E, 29E Section 19,24,25,30 County UMATILLA

State OREGON Date 3/30/2023 Number R-1

Corner Designation : SECTION CORNER: 19, 24, 25, 30

Condition Report Only

Not Found

Renewed

Surveyed In

Referenced

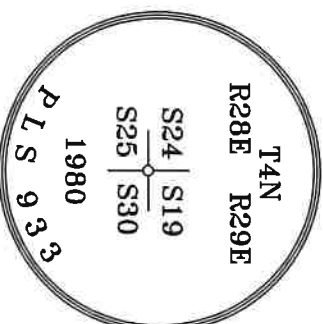
MONUMENT DETAIL

Found Set

Previous Renewals ORIGINAL SOURCE OF CORNER
 ORIGINALLY SURVEYED IN OCT. OF 1860 BY W.B. CAMPBELL
 UNDER CONTRACT #95, HE SET A STAKE IN MOUND OF EARTH
 1954 HIGGINS SET A 1/2" IRON ROD
 1973 HARRIS SET A BRASS CAP BY PROPORTIONAL
 MEASUREMENT, COUNTY SURVEY NO. I-021-C
 1980 KRUMBEIN SET A 2 1/2" BRASS CAP ON 1" PIPE OVER
 HIGGINS IRON ROD COUNTY SURVEY NO. S-156-C

BASIS OF BEARINGS, NAD 83/91 OREGON STATE PLANE
 COORDINATES NORTH ZONE:

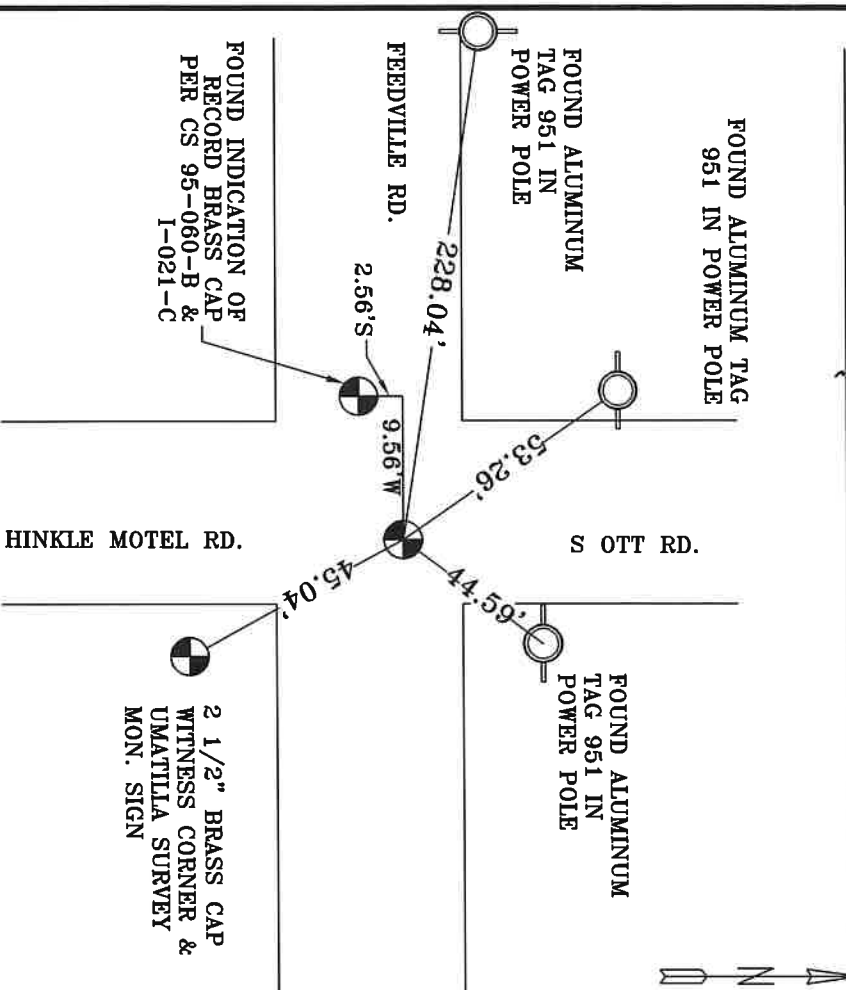
NORTHING: 782363.10
 EASTING: 8521223.62



Monument & Accessories Set/Found (Procedure and Description)

AT CORNER FOUND A 2 1/2" BRASS CAP "LS 933" IN MON. WELL. COUNTY SURVEY S-156-C
 FOUND INDICATION OF BRASS CAP "LS 933" AT RECORD LOCATION PER CS 95-060-B & I-021-C
 SET FROM PROPORTIONAL MEASUREMENT; NOT DUG UP AS DIRECTED BY COUNTY SURVEYOR
 FOUND A 2 1/2" BRASS CAP WITNESS CORNER ON 1" IRON PIPE & UMATILLA SURVEY MON. SIGN
 S 38°11' E 45.04', PER CORNER FORM NO. R1-92-45-C, & CORNER FORM NO. R1-02-048-G
 FOUND A ALUMINUM TAG 951 ON POWER POLE N 37°24' E 44.59', CORNER FORM NO. R1-02-048-G
 FOUND A ALUMINUM TAG 951 ON POWER POLE N 23°52' W 53.26', CORNER FORM NO. R1-02-048-G
 FOUND A ALUMINUM TAG 951 ON POWER POLE N 81°24' W 228.04', CORNER FORM NO. R1-02-048-G

Sketch of Monument, Accessories and General Area



REGISTERED PROFESSIONAL LAND SURVEYOR

OREGON
 MAY 10, 2011
 LANCE CLARK/KING
 61420

RENEWALS: 6/30/2023

Agency: CK3, LLC
 945 W. ORCHARD
 HERMISTON OREGON 97838
 OFFICE: 541-567-2345
 FAX: 541-567-2305
 WEB: CK3LLC.NET
 Field Book# 0-350

COUNTY SURVEYOR RECORDING INFO

Received CT
 Filed 5/4/23
 Survey No. 23-042-C
 Drawing No. _____
 Index No. R-1