

OREGON CORNER RESTORATION FORM

SECTION 19 TOWNSHIP 4 NORTH RANGE 29 EAST P-1

COUNTY : UMATILLA DATE 01-2002

CORNER DESIGNATION

WEST 1/4 CORNER

- CONDITION REPORT ONLY
- NOT FOUND
- RENEWED
- UNCOVERED
- SURVEYED IN
- REFERENCED

PREVIOUS RENEWALS / SURVEYS, ETC.

ORIGINALLY SURVEYED IN OCT. 1860 UNDER CONTRACT #95. W.B. CAMPBELL SET POST, DROVE CHARRED STAKE, MADE PITS AND MOUNDS.
 IN 1980 SURVEY FOR COUNTY, KRUMBEIN SET 2 1/2" BRASS CAP ON 2" IRON PIPE BY SINGLE PROPORTION.

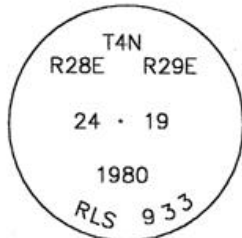
MONUMENTS AND ACCESSORIES FOUND: CONDITION AND SOURCE

FOUND A 2 1/2" BRASS CAP STAMPED AS BELOW FROM WHICH:

- AN ALUMINUM TAG #951 IN POWER POLE BEARS S 18°16'05" E 119.54 FEET
- AN ALUMINUM TAG #951 IN POWER POLE BEARS N 9°25'42" E 230.52 FEET
- A 2 3/8" BRASS CAP ON A 1"X30" IRON PIPE STAMPED W.C. LS 951 BEARS N 89°34'44" W 33.04 FEET

(FOUND 2 3/8" BRASS CAP ON A 1"X30" IRON PIPE 33'± EAST, BENT FROM FARM EQUIPMENT, NOT USED..)

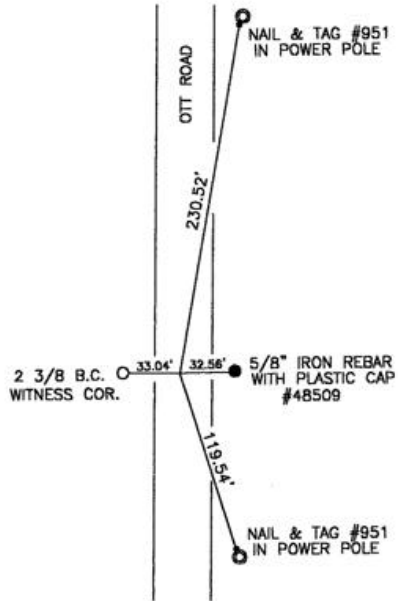
MONUMENT DETAIL



NAD 83/91
 OREGON STATE PLANE
 INTERNATIONAL FEET
 784992.5710
 8521179.3289



SKETCH



MONUMENT SET (PROCEDURES AND DESCRIPTION)

NA

NEW ACCESSORIES FROM WHICH

A 5/8" X 30" REBAR WITH PLASTIC CAP #48509 BEARS N 87°55'04" E 32.56 FEET

LOCATION AND COMMENTS

FROM INTERSECTION OF AIRPORT ROAD AND OTT ROAD, GO SOUTH ON OTT ROAD 1/2 MILE TO CORNER.

COMPASS DEC.

FIRM/AGENCY
 EDWARDS SURVEYING
 P.O. BOX 763
 HERMISTON, OREGON 97838

PARTY CHIEF
 CURTIS FAVOREL
NOTES

WITNESS
 WALT MUNDELL

SURVEYOR'S SEAL

REGISTERED
 PROFESSIONAL
 LAND SURVEYOR

G. Dennis Edwards

OREGON
 JULY 16, 1971
 G. DENNIS EDWARDS
 9 5 1

RECEIVED BY G. DENNIS EDWARDS
 Umatilla County Sur. RENEWS 12/31/2003

Date 2-02
 Rec'd By KP
 No. 02-48-9