

OREGON CORNER RESTORATION FORM

SECTION 19 TOWNSHIP 4 NORTH RANGE 29 EAST N-5
 COUNTY : UMATILLA DATE 01-2002

CORNER DESIGNATION

NE COR

- CONDITION REPORT ONLY
- NOT FOUND
- RENEWED
- UNCOVERED
- SURVEYED IN
- REFERENCED

PREVIOUS RENEWALS / SURVEYS, ETC.

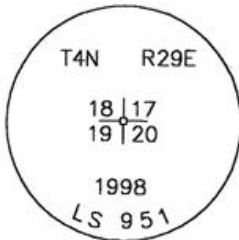
ORIGINALLY SURVEYED IN 1861 BY DAVENPORT UNDER CONTRACT #101. HE SET A POST IN A MOUND OF EARTH AND A CHARRED STAKE.
 IN 1989 EDWARDS SET A 1"X30" IRON PIPE WITH A 2 3/8" BRASS CAP BY SINGLE PROPORTION.

MONUMENTS AND ACCESSORIES FOUND: CONDITION AND SOURCE

FOUND A 2 3/8" BRASS CAP 5" BELOW THE SURFACE OF GRAVEL ROAD STAMPED AS BELOW.
 FROM WHICH:

- AN ALUMINUM TAG #951 ON A POWER POLE STUB BEARS S 62°45'14" W 23.89 FEET.
- AN ALUMINUM TAG #951 IN A R.R. TIE POST BEARS S 20°07'19" E 61.61 FEET.
- A 1/2"X24" IRON REBAR WITH AN ALUMINUM TAG #951 BEARS N89°41'36"E 18.50 FEET.
- A 5/8"X30" IRON REBAR WITH AN ALUMINUM TAG #951 BEARS S89°41'41"W 30.00 FEET

MONUMENT DETAIL



NAD 83/91
 OREGON STATE PLANE
 INTERNATIONAL FEET
 787754.2039
 8526975.1479

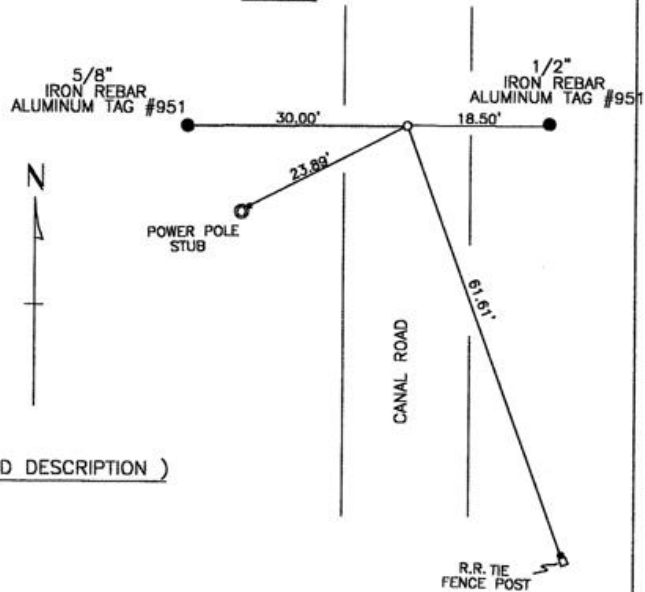
MONUMENT SET (PROCEDURES AND DESCRIPTION)

NA

NEW ACCESSORIES FROM WHICH

NA

SKETCH



LOCATION AND COMMENTS

FROM INTERSECTION OF FEEDVILLE RD. & CANAL ROAD, GO NORTH ON CANAL ROAD 1 MILE TO CORNER.

COMPASS DEC.

FIRM/AGENCY

EDWARDS SURVEYING
 P.O. BOX 763
 HERMISTON, OREGON 97838

PARTY CHIEF
 CURTIS FAVOREL

NOTES

WITNESS
 WALT MUNDELL

SURVEYOR'S SEAL

REGISTERED
 PROFESSIONAL
 LAND SURVEYOR

G. Dennis Edwards

OREGON
 JULY 16, 1971
 G. DENNIS EDWARDS
 9 5 1

RECEIVED BY _____ RENEWS 12/31/2003

Umatilla County Surveyor

Date 2-02

Rec'd By KK

No. 02-48-g