

OREGON CORNER RESTORATION FORM

N-3

Section 19 Township 4N Range 29E

County UMATILLA Date 10/26/89

CORNER DESIGNATION

N 1/4 COR.

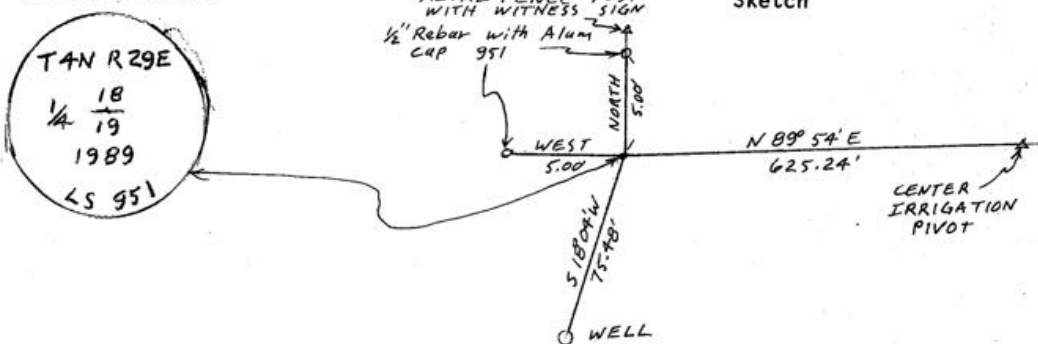
- Condition Report Only
- Not Found
- Renewed
- Unrecorded
- Surveyed In
- Referenced Out

Previous Renewals/Surveys, etc. ORIG. SET IN 1861 BY DAVENPORT UNDER CONTRACT # 101. SET POST, MADE MOUND & DROVE CHARED STAKE

Monument(s) & Accessories Found: (Condition and Source)

FOUND 2" Iron Pipe at an approx 45° from Vertical Disturbed by farming operation. It WAS APPROX. 5.7' North & 13.45' East of the Corner. I Removed it. I had set said pipe with a 2 1/2" BRASS CAP in a 1980 survey for CHOWNING. I set it by single proportion from SEC. Corners which have been changed. SEE MY 10/26/89 SUR. FOR CHET PRIOR

Monument Detail



Monument Set (Procedures and Description)

BY SINGLE PROPORTION I SET 1" x 30" Iron Pipe, with flared bottom & 2 3/8" Brass Cap stamped as above, 6" above surface & piled chunks of concrete around.

New Accessories

<u>1/2" x 24" Rebar with Alum. Cap</u>	<u>Bears</u>	<u>NORTH</u>	<u>5.00 ft.</u>
<u>1/2" x 24" Rebar with Alum Cap</u>	<u>Bears</u>	<u>WEST</u>	<u>5.00 ft.</u>
<u>A WELL</u>	<u>Bears</u>	<u>S 10° 04' W</u>	<u>75.48 ft.</u>
<u>A CENTER IRRIGATION PIVOT</u>	<u>Bears</u>	<u>N 89° 54' E</u>	<u>625.24 ft.</u>

Location & Comments

FROM Intersection of Compass Declination 20 1/2°
FEEVILLE RD. & CANAL Firm/Agency EDWARDS
RD. GO NORTH ON SURVEYING
CANAL 12 mile THEN Address Box 763
WEST 05 mile to COR HERMISTON, OR 97038

Surveyor's Seal

REGISTERED PROFESSIONAL LAND SURVEYOR

G. Dennis Edwards

OREGON JULY 16, 1974 G. DENNIS EDWARDS 951

RECEIVED BY Party Chief D. EDWARDS

Umatilla County Surveyor Notes

Date 11-89 Witness Jud Coppock

Drawn by KA

No. 89-137-B

OREGON CORNER RESTORATION FORM

Section 19 Township 4N Range 29E

County Umatilla Date 10/26/89

CORNER DESIGNATION

N $\frac{1}{4}$ corner

- Condition Report Only
- Not Found
- Renewed
- Unrecorded
- Surveyed In
- Referenced Out

Previous Renewals/Surveys, etc. Original set in 1861 by Davenport under contract #101. Set post, made mound & drove chared stake.

Monument(s) & Accessories Found: (Condition and Source)

Found 2" Iron Pipe at approximately 45° angle from vertical disturbed by farming operation. It was approximatley 5.7' north & 13.45' east of the corner. I removed it. I had set said pipe with a 2½" Brass Cap in a 1980 survey for Chowning. I set it by single proportion from section corners which have benn changed. See my 10/26/89 survey for Chet Prior.

Monument Detail

Sketch

Monument Set (Procedures and Description)

By single proportion I set 1" x 30" iron pipe, with flared bottom & 2 3/8" Brass Cap stamped as above, 6" above surface & piled chunks of concrete around.

New Accessories

½"x24" rebar with aluminum cap bears north 5.00 feet.
½"x24" rebar with aluminum cap bears west 5.00 feet.
a well bears S18°04'W 75.48 feet.
a center irrigation pivot bears N89°54'E 625.24 feet.

Location & Comments

Surveyor's Seal

From intersection of Compass Declination 20½°
Feedville Rd. & Canal Firm/Agency Edwards
Rd. go north on Canal Surveying
1.0 mile then west Address P. O. Box 763
0.5 mile to corner Hermiston, OR
Party Chief D. Edwards
Notes
Witness Jud Coppock

89-137-118