

CORNER RESTORATION FORM

Township 4N Range 29E, 30E Section 13,18,19,24 County UMATILLA

State OREGON Date 3/30/2023 Number N-25

- Condition Report Only
- Not Found
- Renewed
- Surveyed In
- Referenced

Corner Designation : SECTION CORNER:13, 18, 19, 24

Previous Renewals ORIGINAL SOURCE OF CORNER

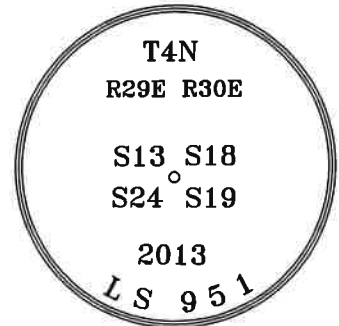
ORIGINALLY SURVEYED IN 1860 BY CAMPBELL UNDER
 CONTRACT 95, HE SET A POST IN MOUND OF EARTH
 1998 EDWARDS SET A 1"X30" I.P. W/2 3/8" BRASS CAP
 COUNTY SURVEY NO. 98-213-C
 2013 EDWARDS SET A 2 1/2" BRASS CAP COUNTY SURVEY NO.
 13-532-C

BASIS OF BEARINGS, NAD 83/91 OREGON STATE PLANE
 COORDINATES NORTH ZONE:

NORTHING: 788362.94
 EASTING: 8553386.70

MONUMENT DETAIL

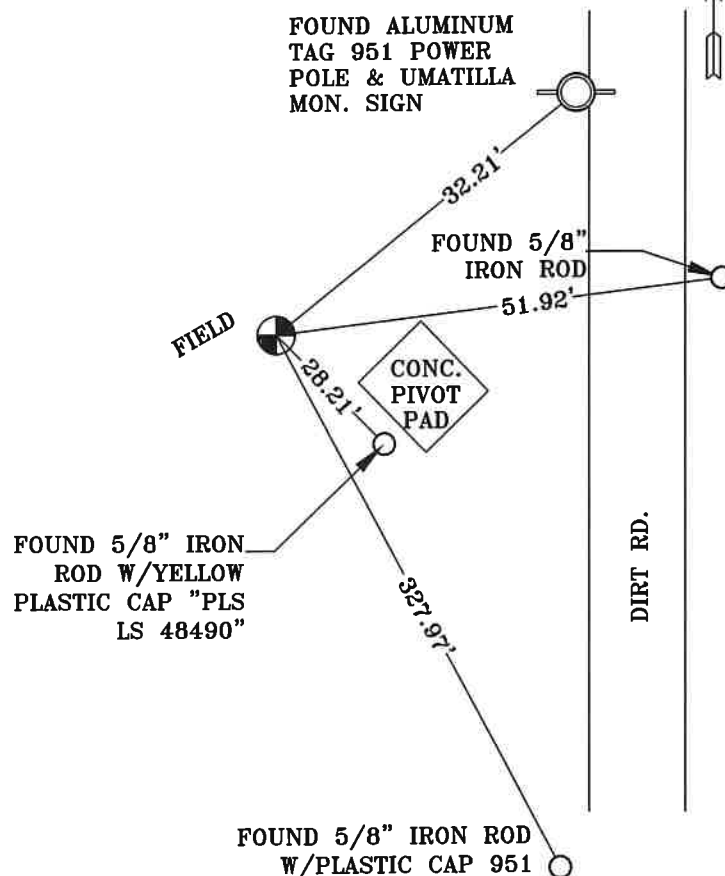
Found Set



Monument & Accessories Set/Found (Procedure and Description)

- AT CORNER FOUND A 2 1/2" BRASS CAP 2' BELOW GRADE IN FIELD, COUNTY SURVEY NO. 13-532-C
- FOUND A 5/8" IRON ROD N 82°49' E 51.92' IN EDGE OF DIRT ROAD 2" BELOW GRADE, CORNER FORM NO. N2513-532-C
- FOUND A ALUMINUM TAG "951" & UMATILLA MON. SIGN ON POWER POLE N 51°13' E 32.21', CORNER FORM NO. N25-98-213-C
- FOUND A 5/8" IRON ROD W/PLASTIC CAP 951 S 05°12' E 327.97', CORNER FORM NO. N25-13-532-C
- FOUND A 5/8" IRON ROD W/YELLOW PLASTIC CAP "PLS LS 48490" S 21°16' E 28.21', CORNER FORM NO. N25-21-004-C

Sketch of Monument, Accessories and General Area



**REGISTERED
 PROFESSIONAL
 LAND SURVEYOR**

**OREGON
 MAY 10, 2011
 LANCE CLARK KING
 61420**

RENEWS: 6/30/2023

Agency:

CK3, LLC
 945 W. ORCHARD
 HERMISTON OREGON 97838
 OFFICE: 541-567-2345
 FAX: 541-567-2305
 WEB: CK3LLC.NET
 Field Book # 0-350

**COUNTY SURVEYOR
 RECORDING INFO**

Received CT
 Filed 5/4/23
 Survey No. 23-042-C
 Drawing No. _____
 Index No. N-25