

# OREGON CORNER RESTORATION FORM

SECTION 13.14,23,24    TOWNSHIP 4 NORTH RANGE 29 EAST    N-21  
 COUNTY : UMATILLA    DATE MAY/20

CORNER DESIGNATION

CONDITION REPORT ONLY

SECTION CORNER

NOT FOUND  
 RENEWED  
 UNCOVERED  
 SURVEYED IN  
 REFERENCED

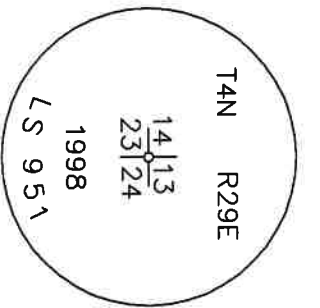
PREVIOUS RENEWALS / SURVEYS, ETC.

ORIGINALLY SURVEYED IN 1861 BY DAVENPORT UNDER CONTRACT #101. HE SET A POST IN A MOUND OF EARTH AND A CHARRED STAKE.  
 IN 1991 TUTTLE FOUND A 17"x12"x10" STONE.  
 IN 1998 EDWARDS SET A 2 3/8" BC STAMPED AS BELOW.

MONUMENTS AND ACCESSORIES FOUND: CONDITION AND SOURCE

A 5/8" IRON ROD WITH A PLASTIC CAP MKD "951" LIES N 42°24'11" W, 162.77 FEET  
 A 5/8" IRON ROD WITH A PLASTIC CAP MKD "951" LIES S 34°48'10" W, 244.55 FEET  
 A 5/8" IRON ROD WITH A PLASTIC CAP MKD "951" LIES S 22°02'47" W, 22.91 FEET  
 A 5/8" IRON ROD WITH A PLASTIC CAP MKD "951" LIES S 61°52'08" E, 152.26 FEET  
 A 2 3/8" BC STAMPED AS BELOW.

MONUMENT DETAIL

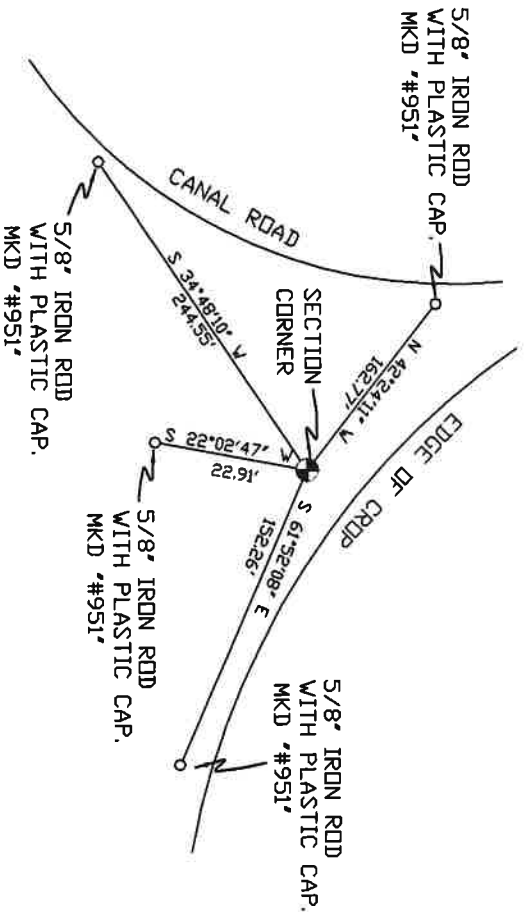


NAD 83/91  
 OREGON STATE PLANE  
 INTERNATIONAL FEET

7882271.40  
 8548108.83

MONUMENT SET ( PROCEDURES AND DESCRIPTION )

NEW ACCESSORIES FROM WHICH



SKETCH

LOCATION AND COMMENTS

IN FENCE LINE ±100' EAST OF  
 IRRIGATION CANAL.

COMPASS DEC.

SURVEYOR'S SEAL

FIRM/AGENCY  
 PRIMM LAND SURVEYING  
 P.O. BOX 1322  
 HERMISTON, OREGON 97838

REGISTERED  
 PROFESSIONAL  
 LAND SURVEYOR

PARTY CHIEF  
 PAUL P. PILCH

OREGON  
 JULY 12, 2005  
 KEITH P. PRIMM  
 48490

NOTES

WITNESS  
 KEITH P. PRIMM

EXPIRATION DATE: 12/31/20

*TPP*

21-004-C

Ø1 DEC 20