

OREGON CORNER RESTORATION FORM

SECTION 14,15,22,23 TOWNSHIP 4 NORTH RANGE 29 EAST N-17
 COUNTY : UMATILLA DATE MAY/20

CORNER DESIGNATION

SECTION CORNER

- X CONDITION REPORT ONLY
 NOT FOUND
 RENEWED
 UNCOVERED
 SURVEYED IN
 REFERENCED

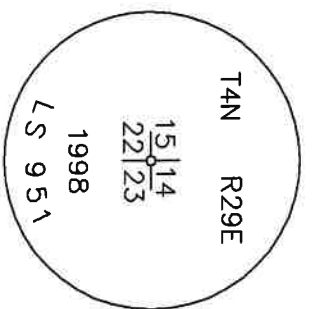
PREVIOUS RENEWALS / SURVEYS, ETC.

ORIGINALLY SURVEYED IN 1861 BY DAVENPORT UNDER CONTRACT #101. HE SET A POST IN A MOUND OF EARTH AND A CHARRED STAKE.
 IN 1998 EDWARDS SET A 2 3/8" BC STAMPED AS BELOW.

MONUMENTS AND ACCESSORIES FOUND: CONDITION AND SOURCE

- A 5/8" IRON ROD WITH A PLASTIC CAP MKD "951" LIES N 89°06'52" W, 24.52 FEET
- A 5/8" IRON ROD WITH A PLASTIC CAP MKD "951" LIES N 0°09'15" E, 19.19 FEET
- A 5/8" IRON ROD WITH A PLASTIC CAP MKD "951" LIES N 89°30'37" E, 19.85 FEET
- A 5/8" IRON ROD LIES S 0°47'54" W, 13.94 FEET
- A 2 3/8" BC STAMPED AS BELOW.

MONUMENT DETAIL



NAD 83/91
 OREGON STATE PLANE
 INTERNATIONAL FEET
 788186.70
 8542821.81

MONUMENT SET (PROCEDURES AND DESCRIPTION)

NEW ACCESSORIES FROM WHICH

LOCATION AND COMMENTS
 1 MILE SOUTH OF HIGHLAND
 EXTENSION AND ±500' WEST
 OF CONCRETE CANAL.

COMPASS DEC.

FIRM/AGENCY
 PRIMM LAND SURVEYING
 P.O. BOX 1322
 HERMISTON, OREGON 97838

SURVEYOR'S SEAL

REGISTERED
 PROFESSIONAL
 LAND SURVEYOR

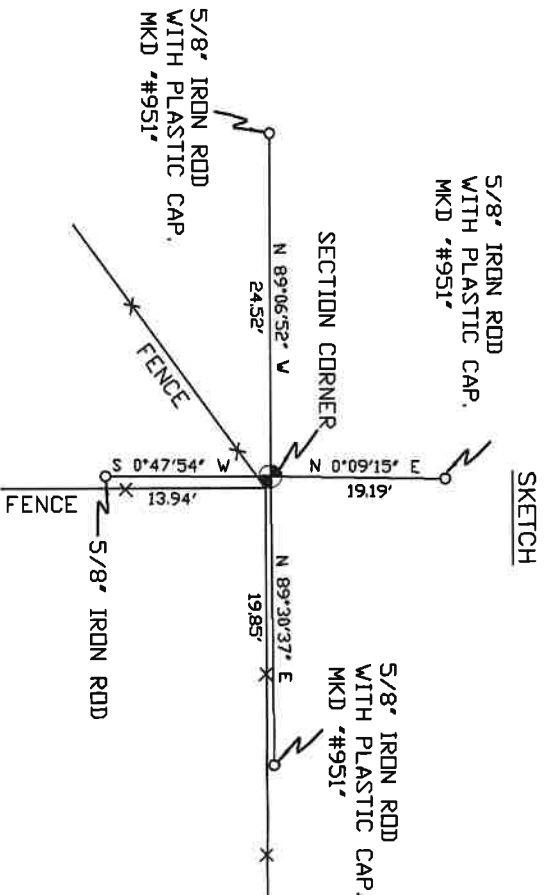
PARTY CHIEF
 PAUL P. PILCH

NOTES

OREGON
 JULY 12, 2005
 KEITH P. PRIMM
 48490

WITNESS
 KEITH P. PRIMM

EXPIRATION DATE: 12/31/20



21-004-C

d1 DEC 20