

# CORNER RESTORATION FORM

Township 4N Range 29E Section 15, 22 County UMATILLA

State OREGON Date 3/30/2023 Number N-15  Condition Report Only

Corner Designation : 1/4 CORNER: 15, 22

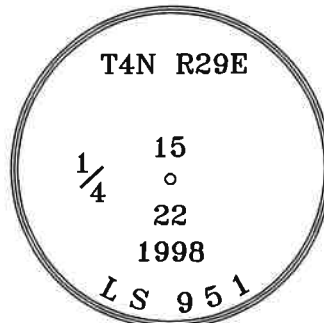
- Not Found
- Renewed
- Surveyed In
- Referenced

Previous Renewals ORIGINAL SOURCE OF CORNER

ORIGINALLY SURVEYED IN 1861 BY DAVENPORT UNDER  
 CONTRACT #101, HE SET A STAKE IN MOUND OF EARTH  
 1998 EDWARDS SET A 1"X30" I.P. W/2 3/8" BRASS CAP BY  
 SINGLE PROPORTION COUNTY SURVEY NO. 98-213-C &  
 CORNER FORM N15-98-213-C

### MONUMENT DETAIL

Found  Set



BASIS OF BEARINGS, NAD 83/91 OREGON STATE PLANE  
 COORDINATES NORTH ZONE:

NORTHING: 788113.66  
 EASTING: 8540163.61

#### Monument & Accessories Set/Found (Procedure and Description)

AT CORNER FOUND A 2 3/8" BRASS CAP & UMATILLA MON SIGN., COUNTY SURVEY NO. 98-213-C & CORNER  
 FORM NO. N15-98-213-C

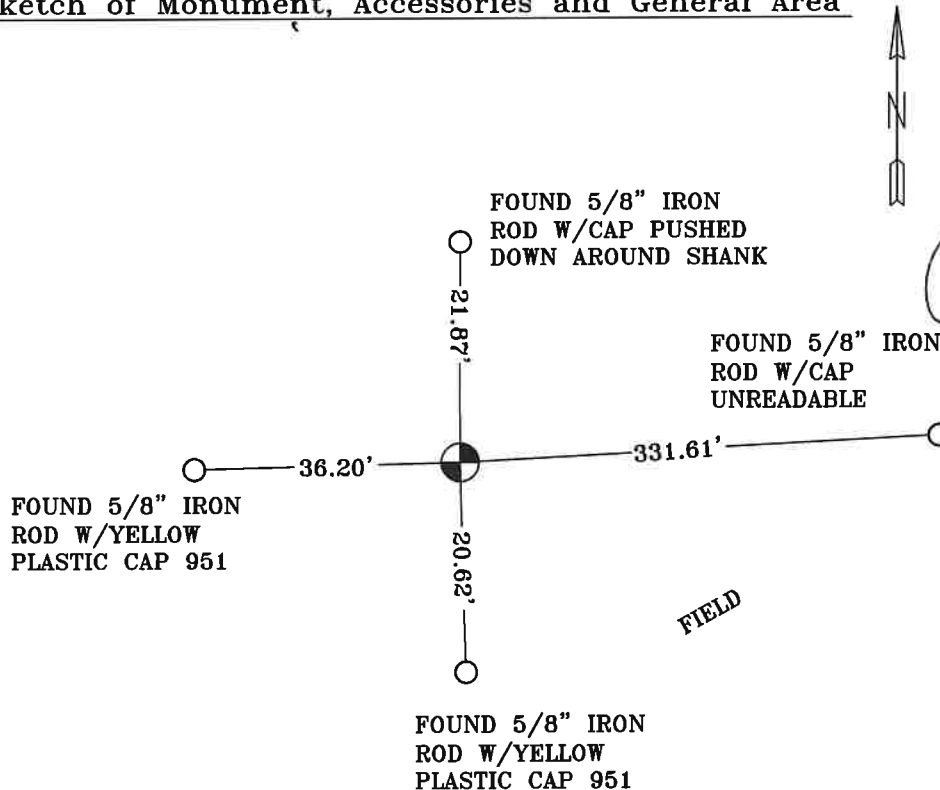
FOUND A 5/8" I.R. W/YPC 951 S 01°35' E 20.62', CORNER FORM NO. N15-98-213-C

FOUND A 5/8" I.R. W/YPC 951 S 88°36' W 36.20', CORNER FORM NO. N15-98-213-C

FOUND A 5/8" I.R. CAP PUSHED DOWN AROUND SHANK N 00°03' E 21.87', CORNER FORM NO. N15-98-213-C

FOUND A 5/8" I.R. W/CAP UNREADABLE N 86°59' E 331.61', CORNER FORM NO. N15-98-213-C

#### Sketch of Monument, Accessories and General Area



**REGISTERED  
 PROFESSIONAL  
 LAND SURVEYOR**

*Lance Clark King*  
**OREGON  
 MAY 10, 2011  
 LANCE CLARK KING  
 61420**

**RENEWS: 6/30/2023**

Agency:  
 CK3, LLC  
 945 W. ORCHARD  
 HERMISTON OREGON 97838  
 OFFICE: 541-567-2345  
 FAX: 541-567-2305  
 WEB: CK3LLC.NET  
 Field Book # 0-350

#### COUNTY SURVEYOR RECORDING INFO

Received LT  
 Filed 5/4/23  
 Survey No. 23-042-C  
 Drawing No. \_\_\_\_\_  
 Index No. N-15