

OREGON CORNER RESTORATION FORM

Section 17 Township 4 N Range 29 E

L-9

County UMATILLA Date 3/95

CORNER DESIGNATION

E 1/4 cor

- Condition Report Only
- Not Found
- Renewed
- Unrecorded
- Surveyed In
- Referenced Out

Previous Renewals/Surveys, etc. ORIG SUR. DAVENPORT 1861 #101

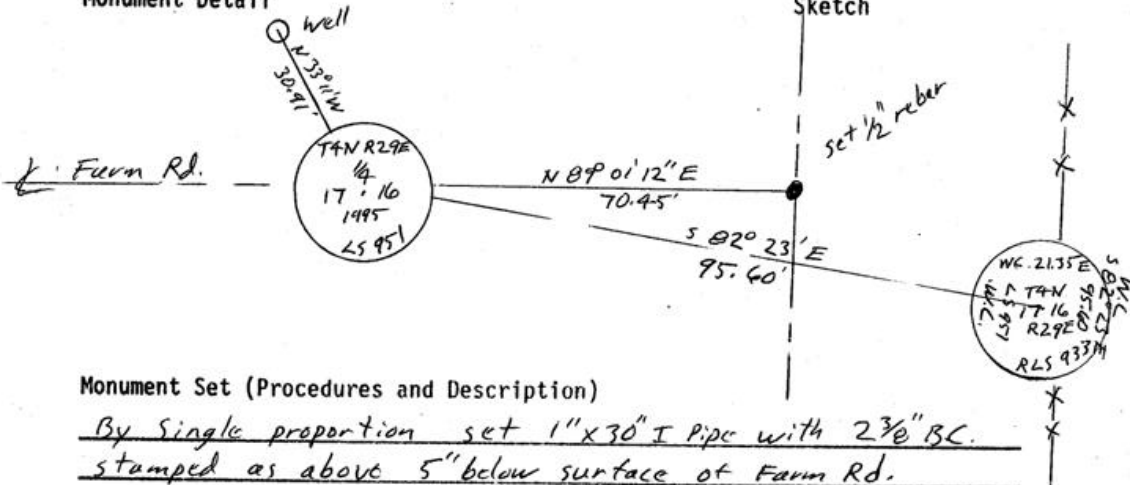
He set a post in mound with charred stake

Krumbein set BC in 1974 Sur. For Pat Walchli

Monument(s) & Accessories Found: (Condition and Source)

Find 2 1/2" B.C. W.C. Krumbein 1974 (21.35' East) S82°23'E 95.60 FT.

Monument Detail



Monument Set (Procedures and Description)

By Single proportion set 1" x 30" I Pipe with 2 3/8" BC. stamped as above 5" below surface of Farm Rd.

SEE MY 1992-1 COUNTY PUBLIC MONUMENTATION SUR.

New Accessories

Center of a (8") well Bears N33° 11' W 30.91 FT

Alum Tag # 951 in P. Pole Bears - N 7° 37' E 236.06 FT.

a 1/2" x 24" rebar with Alum cap in Edwards Rd Bears N89° 01' 12" E 70.45'

Alum Tag # 951 in P. Pole Bears S19° 49' 50" E 121.57 FT

Location & Comments

From Intersection Compass Declination _____
Highland Extension Firm/Agency EDWARDS
with Edwards Rd SURVEYING
90 S on Edwards Address P. Box 763
1/2 Mile. Cor HERMISTON, OR 97838
Lies 70' West Rd. Party Chief D. EDWARDS
 Notes _____
 Witness J. COPPOCK

Surveyor's Seal

REGISTERED PROFESSIONAL LAND SURVEYOR

G. Dennis Edwards

OREGON JULY 16, 1971 G. DENNIS EDWARDS 951

RENEWS 12/31/95

Umatilla County Surveyors

Date _____
Rec'd by _____
No. 9509