

OREGON CORNER RESTORATION FORM

SECTION 8,17 TOWNSHIP 4 NORTH RANGE 29 EAST

J-7

COUNTY : UMATILLA DATE 02/02

CORNER DESIGNATION

1/4 CORNER

CONDITION REPORT ONLY

NOT FOUND

RENEWED

UNCOVERED

SURVEYED IN

REFERENCED

PREVIOUS RENEWALS / SURVEYS, ETC.

ORIGINALLY SURVEYED IN 1861 BY DAVENPORT UNDER CONTRACT #101. HE SET A POST IN A MOUND OF EARTH AND A CHARRED STAKE.

IN 1974 KRUMBEIN SET A BC, SEE SURVEY FOR PAT WALCHLI.

IN 1995 EDWARDS SET A 1" x 30" IRON PIPE WITH A 2 3/8" BRASS CAP STAMPED AS BELOW 5" BELOW SURFACE OF ROAD BY SINGLE PROPORTION.

MONUMENTS AND ACCESSORIES FOUND: CONDITION AND SOURCE

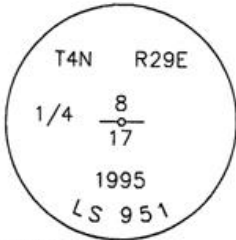
A 2 1/2" BC STAMPED AS BELOW LIES N 32°07'03" E, 27.26 FEET.

AN ALUMINUM TAG #951 ON A POWER POLE LIES N 84°30'50" W, 292.67 FEET.

AN ALUMINUM TAG #951 ON A POWER POLE LIES N 80°43'50" E, 174.33 FEET.

A 2 3/8" BC STAMPED AS BELOW LIES S 30°56'55" E, 44.04 FEET.

MONUMENT DETAIL

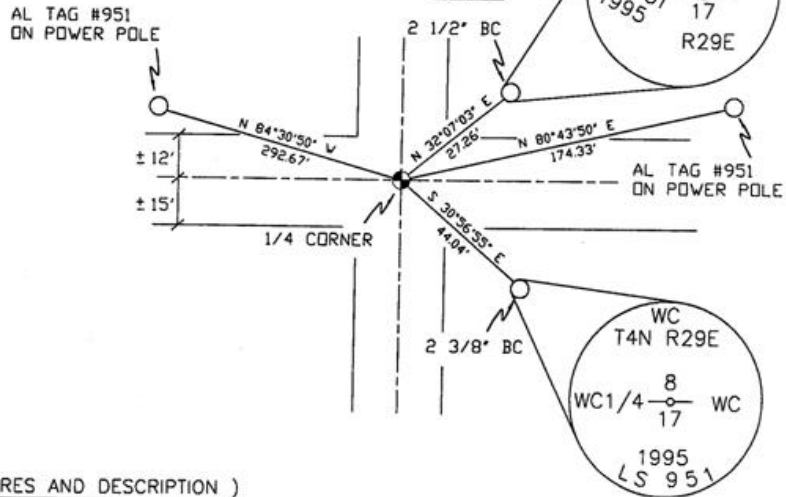


NAD 83/91
OREGON STATE PLANE
INTERNATIONAL FEET

793108.0614
8529520.3778



SKETCH



MONUMENT SET (PROCEDURES AND DESCRIPTION)

NEW ACCESSORIES FROM WHICH

LOCATION AND COMMENTS

FROM INTERSECTION OF CANAL RD. AND HIGHLAND EXT. GO EAST ON HIGHLAND 1/2 MILE TO CORNER.

COMPASS DEC.

FIRM/AGENCY

PRIMM LAND SURVEYING
P.O. BOX 1322
HERMISTON, OREGON 97838

PARTY CHIEF

KEITH P. PRIMM

NOTES

WITNESS

BRIT L. PRIMM

SURVEYOR'S SEAL

REGISTERED
PROFESSIONAL
LAND SURVEYOR

BRIT L. PRIMM

OREGON
JULY 13, 1999
BRIT L. PRIMM
48509

EXPIRATION DATE: 12/31/02

03-52-9