

OREGON CORNER RESTORATION FORM

SECTION 11.14 TOWNSHIP 4 NORTH RANGE 29 EAST

J-19

COUNTY : UMATILLA DATE MAY/20

CORNER DESIGNATION

1/4 CORNER

- CONDITION REPORT ONLY
- NOT FOUND
- RENEWED
- UNCOVERED
- SURVEYED IN
- REFERENCED

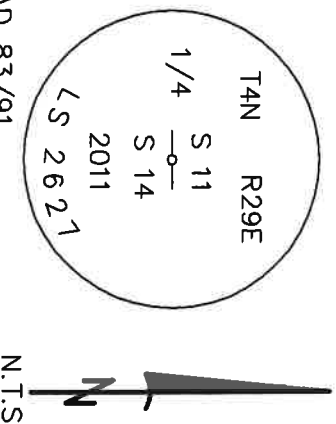
PREVIOUS RENEWALS / SURVEYS, ETC.

ORIGINALLY SURVEYED IN 1861 BY DAVENPORT UNDER CONTRACT #101. HE SET A POST IN A MOUND OF EARTH AND A CHARRED STAKE.
 IN 1905 KIMBRELL SET A CEDAR POST WITH COAL.
 ROBERTS SET A 2" ALUMINUM CAP IN 2011.

MONUMENTS AND ACCESSORIES FOUND: CONDITION AND SOURCE

- A 5/8" IRON ROD LIES N 76°11'15" W, 20.58 FEET.
- A 5/8" IRON ROD WITH A PLASTIC CAP "UCPWD LS 2627" LIES N 73°49'31" E, 20.70 FEET.
- A 5/8" IRON ROD WITH A PLASTIC CAP "UCPWD LS 2627" LIES S 21°18'10" E, 58.20 FEET.
- A 5/8" IRON ROD WITH A PLASTIC CAP "UCPWD LS 2627" LIES S 18°52'23" W, 58.26 FEET.
- A RXR SPIKE LIES S 1°12'13" E, 24.89 FEET.
- A 2" ALUMINUM CAP STAMPED AS BELOW.

MONUMENT DETAIL



NAD 83/91
 OREGON STATE PLANE
 INTERNATIONAL FEET
 793512.62
 8545349.58

MONUMENT SET (PROCEDURES AND DESCRIPTION)

NEW ACCESSORIES FROM WHICH

LOCATION AND COMMENTS
 AT INTERSECTION OF HIGHLAND
 EXTENSION AND LOOP RD.

COMPASS DEC.

FIRM/AGENCY
 PRIMM LAND SURVEYING
 P.O. BOX 1322
 HERMISTON, OREGON 97838

SURVEYOR'S SEAL

REGISTERED
 PROFESSIONAL
 LAND SURVEYOR

PARTY CHIEF
 PAUL P. PILCH

NOTES

WITNESS
 KEITH P. PRIMM

OREGON
 JULY 12, 2005
 KEITH P. PRIMM
 48490

EXPIRATION DATE: 12/31/20

21-004-C

Ø1 DEC 20