

OREGON CORNER RESTORATION FORM

SECTION 9,16 TOWNSHIP 4 NORTH RANGE 29 EAST

J-11

COUNTY : UMATILLA DATE 02/02

CORNER DESIGNATION

1/4 CORNER

X CONDITION REPORT ONLY

- NOT FOUND
- RENEWED
- UNCOVERED
- SURVEYED IN
- REFERENCED

PREVIOUS RENEWALS / SURVEYS, ETC.

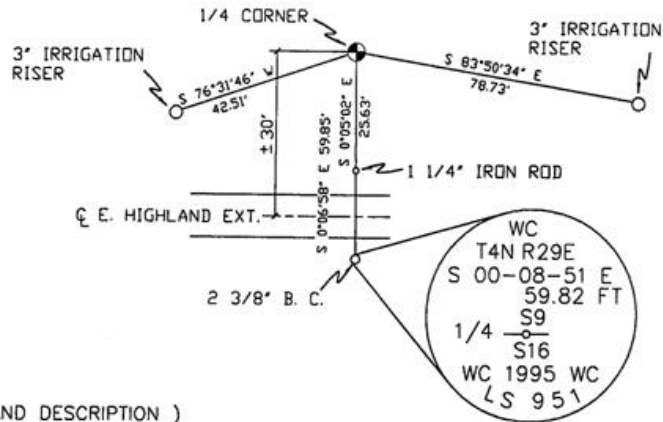
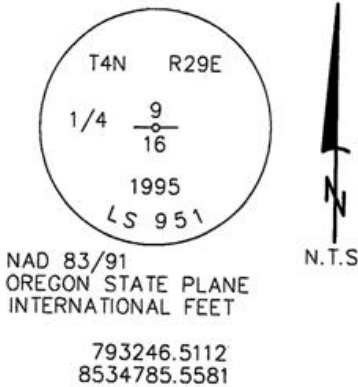
ORIGINALLY SURVEYED IN 1861 BY DAVENPORT UNDER CONTRACT #101. HE SET A POST IN A MOUND OF EARTH AND A CHARRED STAKE.
 IN 1995 EDWARDS SET A 1" x 30" IRON PIPE WITH A 2 3/8" BRASS CAP STAMPED AS BELOW, BY SINGLE PROPORTION.

MONUMENTS AND ACCESSORIES FOUND: CONDITION AND SOURCE

- A 3" IRRIGATION RISER LIES S 83°50'34" E, 78.73 FEET.
- A 3" IRRIGATION RISER LIES S 76°31'46" W, 42.51 FEET.
- A 1 1/4" IRON ROD LIES S 0°05'02" E, 25.63 FEET.
- A 2 3/8" B.C. STAMPED AS BELOW LIES S 0°06'58" E, 59.85 FEET.

MONUMENT DETAIL

SKETCH



MONUMENT SET (PROCEDURES AND DESCRIPTION)

NEW ACCESSORIES FROM WHICH

LOCATION AND COMMENTS

FROM INTERSECTION OF EDWARDS RD. WITH HIGHLAND EXTENSION GO EAST ON HIGHLAND 1/2 MILE TO CORNER.

COMPASS DEC.

FIRM/AGENCY
 PRIMM LAND SURVEYING
 P.O. BOX 1322
 HERMISTON, OREGON 97838

PARTY CHIEF
 KEITH P. PRIMM

NOTES

WITNESS
 BRIT L. PRIMM

SURVEYOR'S SEAL

REGISTERED
 PROFESSIONAL
 LAND SURVEYOR

BLP

OREGON
 JULY 13, 1999
 BRIT L. PRIMM
 48509

EXPIRATION DATE:12/31/02

03-52-g