

OREGON CORNER RESTORATION FORM

SECTION 9.10 TOWNSHIP 4 NORTH RANGE 29 EAST

G-13

COUNTY : UMATILLA DATE MAY/20

CORNER DESIGNATION

1/4 CORNER

- X CONDITION REPORT ONLY
 NOT FOUND
 RENEWED
 UNCOVERED
 SURVEYED IN
 REFERENCED

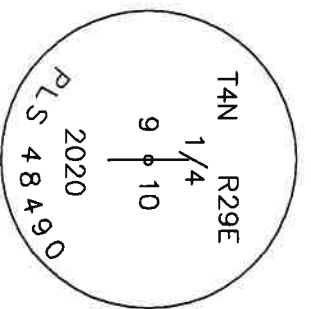
PREVIOUS RENEWALS / SURVEYS, ETC.

ORIGINALLY SURVEYED IN 1861 BY DAVENPORT UNDER CONTRACT #101. HE SET A POST IN A MOUND OF EARTH AND A CHARRED STAKE.
 IN 1995 EDWARDS SET A 1" x 30" IRON PIPE WITH A 2 3/8" BC STAMPED AS BELOW 20" BELOW SURFACE IN CULTIVATED FIELD BY SINGLE PROPORTION.

MONUMENTS AND ACCESSORIES FOUND: CONDITION AND SOURCE

- AN ALUMINUM TAG #951 ON A POWER POLE LIES N 5°51'54" E, 184.98 FEET.
- AN ALUMINUM TAG #951 ON A POWER POLE LIES S 6°49'56" E, 170.04 FEET.
- A 5/8" IRON ROD WITH A YELLOW PLASTIC CAP MKD "#951" 6" BELOW SURFACE LIES N 89°21'29" E, 18.05 FEET.
- A 1/2" IRON ROD WITH A YELLOW PLASTIC CAP MKD "#951" 15" BELOW SURFACE LIES N 89°58'25" W, 11.22 FEET.
- A 1 1/4" IRON PIPE WITH NO CAP FOUND BENT AND DISTURBED NEAR CORNER LOCATION

MONUMENT DETAIL



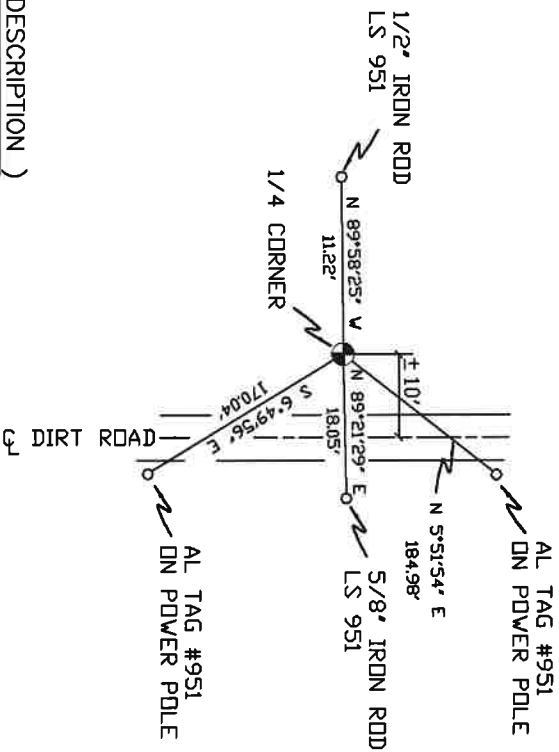
NAD 83/91
 OREGON STATE PLANE
 INTERNATIONAL FEET
 795974.34
 8537370.95

MONUMENT SET (PROCEDURES AND DESCRIPTION)

SET 5/8" X 30" IRON ROD WITH 2" ALUMINUM CAP STAMPED AS ABOVE
 COMPUTED LOCATION FROM FOUND ACCESSORIES

NEW ACCESSORIES FROM WHICH

SKETCH



LOCATION AND COMMENTS

FROM INTERSECTION OF EDWARDS RD. AND HIGHLAND EXT. GO EAST ON HIGHLAND 1 MILE TO POWER LINE, THEN GO NORTH 1/2 MILE ALONG SAID POWER LINE TO CORNER.

COMPASS DEC.

FIRM/AGENCY
 PRIMM LAND SURVEYING
 P.O. BOX 1322
 HERMISTON, OREGON 97838

SURVEYOR'S SEAL

REGISTERED
 PROFESSIONAL
 LAND SURVEYOR

PARTY CHIEF
 KEITH P. PRIMM

NOTES

OREGON
 JULY 12, 2005
 KEITH P. PRIMM
 48490

WITNESS
 KEITH P. PRIMM

EXPIRATION DATE: 12/31/20

21-004-C

01 DEC 20