

OREGON CORNER RESTORATION FORM

SECTION 7,12 TOWNSHIP 4 NORTH RANGE 28,29 EAST G-1
 COUNTY : UMATILLA DATE 02/02

CORNER DESIGNATION

1/4 CORNER

- CONDITION REPORT ONLY
- NOT FOUND
- RENEWED
- UNCOVERED
- SURVEYED IN
- REFERENCED

PREVIOUS RENEWALS / SURVEYS, ETC.

ORIGINALLY SURVEYED IN 1860 BY CAMPBELL UNDER CONTRACT #95. HE SET A POST IN A MOUND OF EARTH.
 IN 1980 KRUMBEIN SET A 2 1/2" BC STAMPED AS BELOW SEE SURVEY S-156.

MONUMENTS AND ACCESSORIES FOUND: CONDITION AND SOURCE

- A 2 3/8" BC STAMPED AS BELOW LIES N 89°58'34" W, 36.67 FEET.
- MILE POST #3 SIGN LIES N 1°11'51" E, 125.29 FEET.
- A 2" X 2" ANGLE IRON LIES N 87°07'33" E, 0.53 FEET.
- A 3/4" WHEEL STEM FOR HEADGATE LIES S 0°48'54" E, 177.38 FEET.

MONUMENT DETAIL

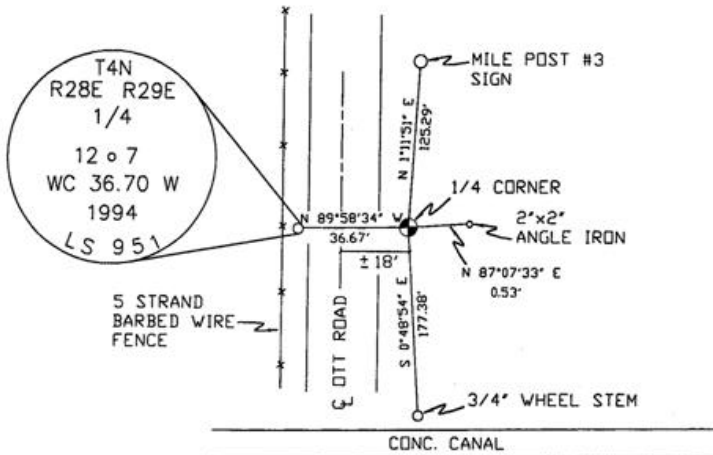
T4N
R28E R29E
1/4
1207
1980
RLS 933

NAD 83/91
OREGON STATE PLANE
INTERNATIONAL FEET

795563.7121
8521027.5731



SKETCH



MONUMENT SET (PROCEDURES AND DESCRIPTION)

NEW ACCESSORIES FROM WHICH

LOCATION AND COMMENTS

FROM INTERSECTION OF
 HOOKER (ELM) AND OTT RD.
 GO SOUTH 1/2 MILE TO CORNER.

COMPASS DEC.

FIRM/AGENCY
 PRIMM LAND SURVEYING
 P.O. BOX 1322
 HERMISTON, OREGON 97838

PARTY CHIEF
 KEITH P. PRIMM

NOTES

WITNESS
 BRIT L. PRIMM

SURVEYOR'S SEAL

REGISTERED
 PROFESSIONAL
 LAND SURVEYOR

Brit L. Primm
 OREGON
 JULY 13, 1999
 BRIT L. PRIMM
 48509

EXPIRATION DATE:12/31/02

03-52-9