

OREGON CORNER RESTORATION FORM

SECTION 2,3,10,11 TOWNSHIP 4 NORTH RANGE 29 EAST E-17
 COUNTY : UMATILLA DATE MAY/20

CORNER DESIGNATION

SECTION CORNER

- CONDITION REPORT ONLY
- NOT FOUND
- RENEWED
- UNCOVERED
- SURVEYED IN
- REFERENCED

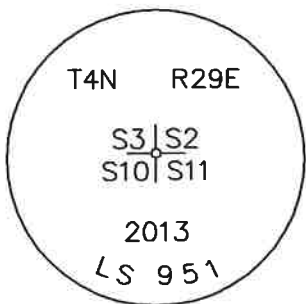
PREVIOUS RENEWALS / SURVEYS, ETC.

ORIGINALLY SURVEYED IN 1861 BY DAVENPORT UNDER CONTRACT #101. HE SET A POST IN A MOUND OF EARTH AND A CHARRED STAKE.
 EDWARDS SET A 2 3/8" BC IN 2013.

MONUMENTS AND ACCESSORIES FOUND: CONDITION AND SOURCE

- A 5/8" IRON ROD WITH A PLASTIC CAP "#951" LIES S 7°24'06" W, 90.95 FEET.
- A 5/8" IRON ROD WITH A PLASTIC CAP "#951" LIES S 87°35'23" W, 11.79 FEET.
- A 5/8" IRON ROD WITH A PLASTIC CAP "#951" LIES N 22°42'55" W, 33.42 FEET.
- A 5/8" IRON ROD WITH A PLASTIC CAP "#951" LIES N 6°09'47" E, 31.65 FEET.
- A 2 1/2" BC STAMPED AS BELOW.

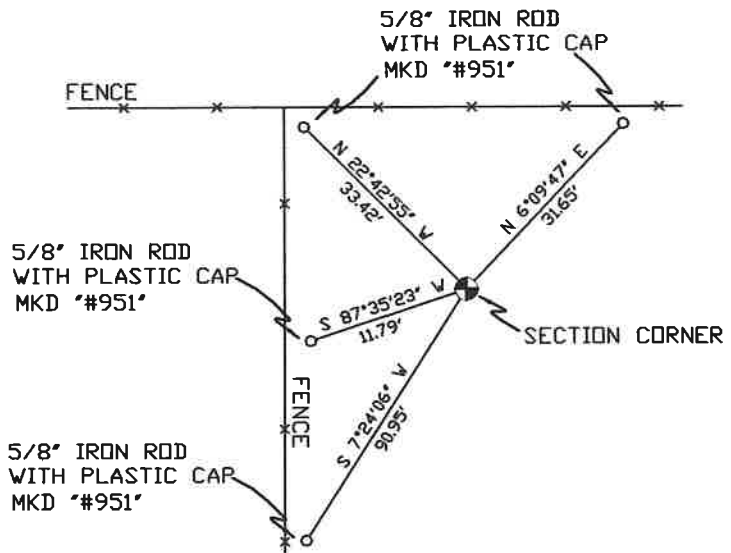
MONUMENT DETAIL



NAD 83/91
 OREGON STATE PLANE
 INTERNATIONAL FEET

798747.17
 8542639.62

SKETCH



MONUMENT SET (PROCEDURES AND DESCRIPTION)

NEW ACCESSORIES FROM WHICH

LOCATION AND COMMENTS

FROM THE MOST NORTHEASTERLY CORNER OF LOOP RD., GO WEST 0.5 MILES TO A FENCE CORNER THEN GO NORTH 0.25 MILES TO CORNER.

COMPASS DEC.

FIRM/AGENCY

PRIMM LAND SURVEYING
 P.O. BOX 1322
 HERMISTON, OREGON 97838

PARTY CHIEF

PAUL P. PILCH

NOTES

WITNESS

KEITH P. PRIMM

SURVEYOR'S SEAL

REGISTERED
 PROFESSIONAL
 LAND SURVEYOR

Keith P. Primm
 OREGON
 JULY 12, 2005
 KEITH P. PRIMM
 48490

EXPIRATION DATE: 12/31/20

THA 21-004-C

01 DEC 20