

OREGON CORNER RESTORATION FORM

SECTION 6,5 TOWNSHIP 4 NORTH RANGE 29 EAST
 COUNTY : UMATILLA DATE MAY/20

C-5

CORNER DESIGNATION

1/4 CORNER

CONDITION REPORT ONLY
 NOT FOUND
 RENEWED
 UNCOVERED
 SURVEYED IN
 REFERENCED

PREVIOUS RENEWALS / SURVEYS, ETC.

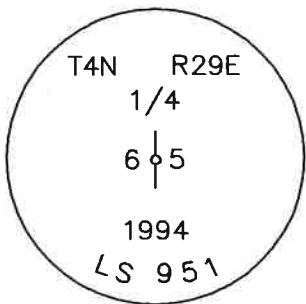
ORIGINALLY SURVEYED IN 1861 BY DAVENPORT UNDER CONTRACT #101. HE SET A POST IN A MOUND OF EARTH AND A CHARRED STAKE.
 IN 1979 EDWARDS SET A R x R SPIKE, (TAYLOR SURVEY).
 IN 1985 EDWARDS SET A R x R SPIKE, (ATKINS SURVEY).
 IN 1994 EDWARDS SET A 1" x 30" IRON PIPE WITH A 2 3/8" BC STAMPED AS BELOW IN PLACE OF 1985 R x R SPIKE, (ATKINS SURVEY).

MONUMENTS AND ACCESSORIES FOUND: CONDITION AND SOURCE

A 2 1/4" OD IRON PIPE FENCE CORNER MARKED WITH A SCRIBE ON TOP OF CAP LIES N 61°04'39" W, 35.77 FEET.
 A 2 1/4" OD IRON PIPE FENCE CORNER MARKED WITH A SCRIBE ON TOP OF CAP LIES N 55°57'26" E, 42.54 FEET.
 A 2 3/8" BC STAMPED AS BELOW.

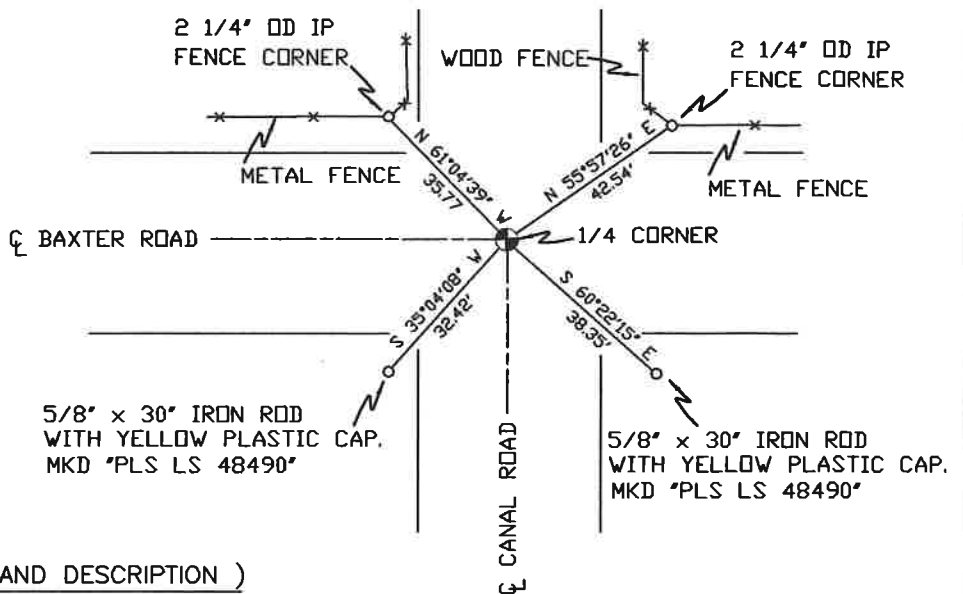
MONUMENT DETAIL

SKETCH



NAD 83/91
 OREGON STATE PLANE
 INTERNATIONAL FEET

800999.70
 8526774.71



MONUMENT SET (PROCEDURES AND DESCRIPTION)

NEW ACCESSORIES FROM WHICH

A 5/8" x 30" IRON ROD WITH A YELLOW PLASTIC CAP MKD "PLS LS 48490" LIES S 35°04'08" W, 32.42 FEET.
 A 5/8" x 30" IRON ROD WITH A YELLOW PLASTIC CAP MKD "PLS LS 48490" LIES S 60°22'15" E, 38.35 FEET.

LOCATION AND COMMENTS

AT INTERSECTION OF BAXTER RD. AND CANAL RD.

COMPASS DEC.

FIRM/AGENCY
 PRIMM LAND SURVEYING
 P.O. BOX 1322
 HERMISTON, OREGON 97838

PARTY CHIEF
 BRIT L. PRIMM

NOTES

WITNESS
 KEITH P. PRIMM

SURVEYOR'S SEAL

REGISTERED
 PROFESSIONAL
 LAND SURVEYOR

Keith P. Primm
 OREGON
 JULY 12, 2005
 KEITH P. PRIMM
 48490

EXPIRATION DATE: 12/31/20

IAA 21-004-C

01 DEC 20