

OREGON CORNER RESTORATION FORM

SECTION 4,3 TOWNSHIP 4 NORTH RANGE 29 EAST
 COUNTY : UMATILLA DATE MAY/20

C-13

CORNER DESIGNATION

1/4 CORNER

- CONDITION REPORT ONLY
- NOT FOUND
- RENEWED
- UNCOVERED
- SURVEYED IN
- REFERENCED

PREVIOUS RENEWALS / SURVEYS, ETC.

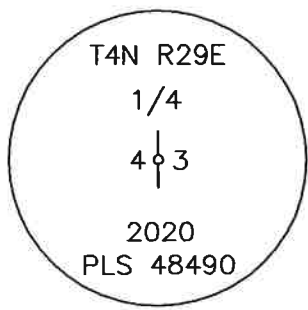
ORIGINALLY SURVEYED BY DAVENPORT IN 1861, #101. HE SET A POST IN A MOUND WITH CHARRED STAKE.
 UNRECORDED SURVEY IN 1924 BY U.S. BIOLOGICAL SURVEY.
 EDWARDS SET A 2 3/8" BC IN 1990. NOT FOUND

MONUMENTS AND ACCESSORIES FOUND: CONDITION AND SOURCE

AN ALUMINUM TAG #951 ON A FENCE POST LIES N 7°37'34" W, 35.97' FEET.
 AN ALUMINUM TAG #951 ON A FENCE POST LIES N 27°37'48" E, 39.74' FEET.
 AN ALUMINUM TAG #951 ON A FENCE POST LIES S 0°56'02" E, 51.68' FEET.
 A SCRIBE ON A CONCRETE PAD LIES N 15°27'33" W, 157.96' FEET.

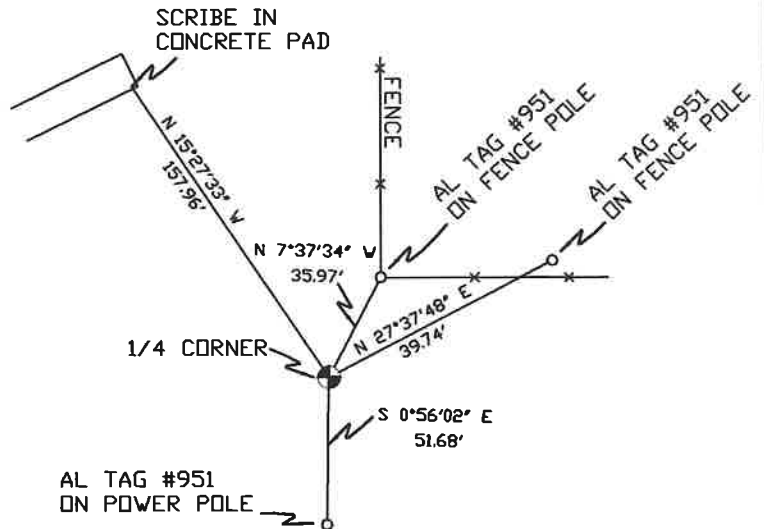
MONUMENT DETAIL

SKETCH



NAD 83/91
 OREGON STATE PLANE
 INTERNATIONAL FEET

801287.10
 8537313.26



MONUMENT SET (PROCEDURES AND DESCRIPTION)

FROM BEARING OBJECTS I PLACED A 5/8" X 30" IRON ROD WITH A 2" ALUMINUM CAP AS STAMPED ABOVE.

NEW ACCESSORIES FROM WHICH

LOCATION AND COMMENTS

FROM INTERSECTION OF LOOP RD. AND EDWARDS RD., GO ALONG NORTH BANK OF CANAL 1.4 MILES, CORNER IS 792' NORTHERLY OF THE CANAL AT GAME REFUGE FENCE CORNER.

COMPASS DEC.

FIRM/AGENCY

PRIMM LAND SURVEYING
 P.O. BOX 1322
 HERMISTON, OREGON 97838

PARTY CHIEF

PAUL P. PILCH

NOTES

WITNESS

KEITH P. PRIMM

SURVEYOR'S SEAL

REGISTERED
 PROFESSIONAL
 LAND SURVEYOR

Keith P. Primm
 OREGON
 JULY 12, 2005
 KEITH P. PRIMM
 48490

EXPIRATION DATE: 12/31/20

FMA 21-004-C

DI DEC 20