

OREGON CORNER RESTORATION FORM

SECTION 1,6 TOWNSHIP 4 NORTH RANGE 28,29 EAST C-1

COUNTY : UMATILLA DATE 02/02

CORNER DESIGNATION

1/4 CORNER

X CONDITION REPORT ONLY

- NOT FOUND
- RENEWED
- UNCOVERED
- SURVEYED IN
- REFERENCED

PREVIOUS RENEWALS / SURVEYS, ETC.

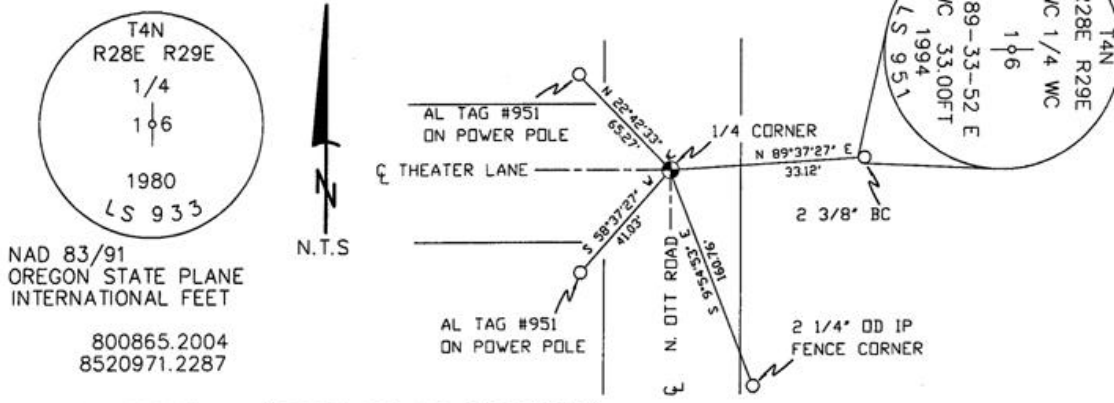
ORIGINALLY SURVEYED IN 1860 BY CAMPBELL UNDER CONTRACT #95. HE SET A POST IN A MOUND.
 IN 1949 OFNER SET A 3/4" IP.
 IN 1980 KRUMBEIN SET A 2 1/2" BC OVER 3/4" IP, (S-156).

MONUMENTS AND ACCESSORIES FOUND: CONDITION AND SOURCE

AN ALUMINUM TAG #951 ON A POWER POLE LIES N 22°42'33" W, 65.27 FEET.
 AN ALUMINUM TAG #951 ON A POWER POLE LIES S 58°37'27" W, 41.03 FEET.
 A 2 3/8" BC STAMPED AS BELOW LIES N 89°37'27" E, 33.12 FEET.
 A 2 1/4" OD IRON PIPE FENCE CORNER MARKED WITH A SCRIBE ON TOP OF CAP LIES S 9°54'53" E, 160.76 FEET.

MONUMENT DETAIL

SKETCH



NAD 83/91
 OREGON STATE PLANE
 INTERNATIONAL FEET

800865.2004
 8520971.2287

MONUMENT SET (PROCEDURES AND DESCRIPTION)

NEW ACCESSORIES FROM WHICH

LOCATION AND COMMENTS

AT THE INTERSECTION OF OTT ROAD AND THEATER LANE.

COMPASS DEC.

FIRM/AGENCY
 PRIMM LAND SURVEYING
 P.O. BOX 1322
 HERMISTON, OREGON 97838

PARTY CHIEF
 KEITH P. PRIMM

NOTES

WITNESS
 BRIT L. PRIMM

SURVEYOR'S SEAL

REGISTERED
 PROFESSIONAL
 LAND SURVEYOR

Brit L. Primm

OREGON
 JULY 13, 1999
 BRIT L. PRIMM
 48509

EXPIRATION DATE:12/31/02

03-52-9