

OREGON CORNER RESTORATION FORM

SECTION 5,32 TOWNSHIP 4,5 NORTH RANGE 29 EAST
 COUNTY : UMATILLA DATE MAY/20

A-7

CORNER DESIGNATION

1/4 CORNER

- CONDITION REPORT ONLY
- NOT FOUND
- RENEWED
- UNCOVERED
- SURVEYED IN
- REFERENCED

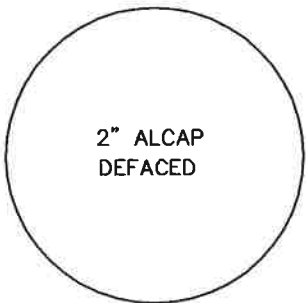
PREVIOUS RENEWALS / SURVEYS, ETC.

IN 1995 EDWARDS SET A 5/8" X 30" IRON ROD WITH A 2" ALUMINUM CAP FLUSH WITH PAVEMENT STAMPED AS BELOW, BY SINGLE PROPORTION.

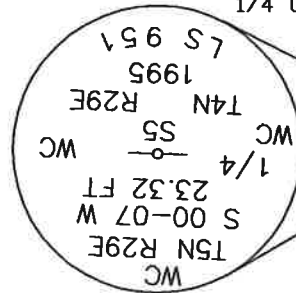
MONUMENTS AND ACCESSORIES FOUND: CONDITION AND SOURCE

AN ALUMINUM TAG #951 ON A POWER POLE LIES S 30°56'58" E, 23.29' FEET.
 A 2 3/8" BC STAMPED AS BELOW LIES S 00°25'52" W, 18.85 FEET.
 A 1" x 1" ALUMINUM TAG MKD "PLS LS 48509" ON A POWER POLE SUPPORT LIES N 85°16'43" W, 234.19 FEET.
 AN ALUMINUM CAP STAMPED AS BELOW.

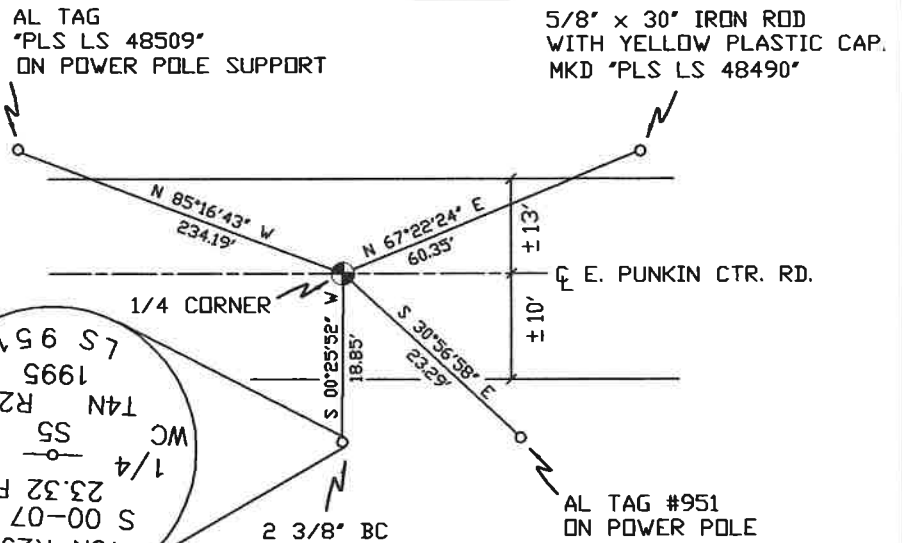
MONUMENT DETAIL



NAD 83/91
 OREGON STATE PLANE
 INTERNATIONAL FEET
 803853.12
 8529388.18



SKETCH



MONUMENT SET (PROCEDURES AND DESCRIPTION)

NEW ACCESSORIES FROM WHICH

A 5/8" x 30" IRON ROD WITH A YELLOW PLASTIC CAP MKD "PLS LS 48490" LIES N 67°22'24" E, 60.35 FEET.

LOCATION AND COMMENTS

FROM INTERSECTION OF CABANA RD. AND PUNKIN CTR. RD. GO WEST ON PUNKIN CTR. 450 FT TO CORNER.

COMPASS DEC.

FIRM/AGENCY
 PRIMM LAND SURVEYING
 P.O. BOX 1322
 HERMISTON, OREGON 97838

PARTY CHIEF
 KEITH P. PRIMM

NOTES

WITNESS
 KEITH P. PRIMM

SURVEYOR'S SEAL

REGISTERED
 PROFESSIONAL
 LAND SURVEYOR

Keith P. Primm
 OREGON
 JULY 12, 2005
 KEITH P. PRIMM
 48490

EXPIRATION DATE: 12/31/20

21-004-C

01 DEC 20