

OREGON CORNER RESTORATION FORM

SECTION 6 TOWNSHIP 4 NORTH RANGE 29 EAST

A-3

COUNTY : UMATILLA DATE 01-2002

CORNER DESIGNATION

NORTH 1/4

CONDITION REPORT ONLY
 NOT FOUND
 RENEWED
 UNCOVERED
 SURVEYED IN
 REFERENCED

PREVIOUS RENEWALS / SURVEYS, ETC.

FOUND 1 1/4 O.D. IRON PIPE WITH TOP 13" BROKEN OFF, BEARS N 0°03'37" E 17.19' FROM CORNER, ORIGIN UNKNOWN.

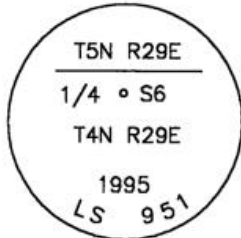
IN 1995 EDWARDS SET A 5/8"X30" IRON REBAR WITH AN ALUMINUM CAP STAMPED AS BELOW. SEE MY 1992-1 COUNTY PUBLIC MONUMENTATION SURVEY.

MONUMENTS AND ACCESSORIES FOUND: CONDITION AND SOURCE

FOUND AN ALUMINUM CAP STAMPED AS BELOW:
FROM WHICH:

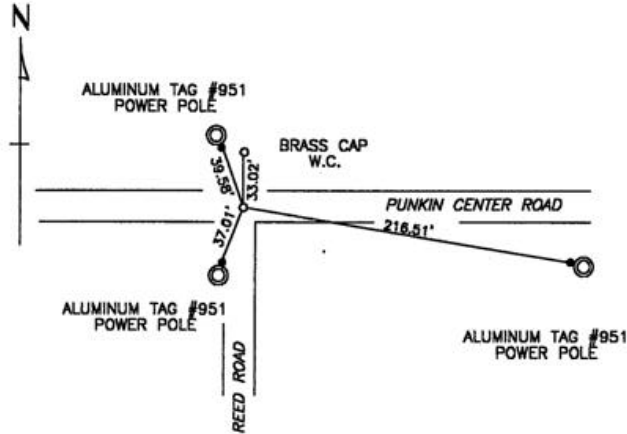
AN ALUMINUM TAG #951 ON A POWER POLE BEARS N 19°16'45" W 39.58 FEET
AN ALUMINUM TAG #951 ON A POWER POLE BEARS S 21°44'28" W 37.01 FEET
A 1"X30" IRON PIPE WITH A 2 3/8" BRASS CAP WITNESS CORNER BEARS N 0°05'29" E 33.02 FEET

MONUMENT DETAIL



NAD 83/91
OREGON STATE PLANE
INTERNATIONAL FEET
803789.3101
8524085.1493

SKETCH



MONUMENT SET (PROCEDURES AND DESCRIPTION)

NA

NEW ACCESSORIES FROM WHICH

AN ALUMINUM TAG #951 ON A POWER POLE BEARS S 80°27'01" E 216.51 FEET

LOCATION AND COMMENTS
AT THE INTERSECTION OF REED
ROAD AND PUNKIN CENTER ROAD

COMPASS DEC.

FIRM/AGENCY
EDWARDS SURVEYING
P.O. BOX 763
HERMISTON, OREGON 97838

PARTY CHIEF
CURTIS FAVOREL

NOTES

WITNESS
WALT MUNDELL

SURVEYOR'S SEAL

REGISTERED
PROFESSIONAL
LAND SURVEYOR

OREGON
JULY 16, 1971
G. DENNIS EDWARDS
951
RENEWS 12/31/2003

RECEIVED BY

Umatilla County Surveyor

Date 3-03

Rec'd By KK

No. 03-33-9