

OREGON CORNER RESTORATION FORM

SECTION 4 TOWNSHIP 4N RANGE 29E A-11

COUNTY: UMATILLA DATE 9/90

CORNER DESIGNATION

North 1/4 Corner

CONDITION REPORT ONLY
NOT FOUND
RENEWED
UNRECORDED
x SURVEYED IN
x REFERENCED OUT

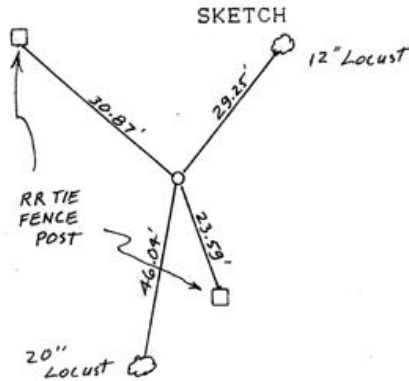
PREVIOUS RENEWALS/SURVEYS, ETC.

Kimbrrell Survey #308 in 1910. He did not say if he set anything.

MONUMENTS & ACCESSORIES FOUND: Condition and Source

Nothing found.

MONUMENT DETAIL



MONUMENT SET (PROCEDURES AND DESCRIPTION)

Set 1"x30" Iron pipe with 2 3/8" Brass Cap, stamped as above, by single proportion flush with surface of paved road. SEE MY SURVEY FOR HELLBERG, County #

NEW ACCESSORIES

From which

- Alum. tag #951 in 12" Locust tree Bears. N37° 55'10"E 29.25 feet.
Alum. tag #951 in RR tie fence post Bears. N50° 08'W 30.87 feet.
Alum. tag #951 in 20" Locust tree Bears. S10° 40'30"W 46.04 feet.
Alum. tag #951 in RR tie fence post Bears. S18° 58'10"E 23.59 feet.

Attached B.O. Signs to all and a Witness sign to SE RR Tie SURVEYOR'S SEAL

LOCATION & COMMENTS

From intersection of Edwards Rd. and Punkin Center Rd., go East on Punkin Center Rd. 0.5 miles to corner.

COMPASS DEC.
FIRM EDWARDS SURVEYING
P.O. BOX 763, HERMISTON, OREGON, 97838
PARTY CHIEF D. EDWARDS

NOTES
WITNESS J. COPPOCK

REGISTERED PROFESSIONAL LAND SURVEYOR

Signature of D. Dennis Edwards

OREGON JULY 16, 1971 G. DENNIS EDWARDS 951

RECEIVED BY

Umatilla County Surveyor

Date 11-90

Rec'd KA

No. 90-077-B