

OREGON CORNER RESTORATION FORM

SECTION 34 TOWNSHIP 4 NORTH RANGE 27 EAST Z-13

COUNTY : UMATILLA DATE 08-2002

CORNER DESIGNATION

SW CORNER

- CONDITION REPORT ONLY
- NOT FOUND
- RENEWED
- UNCOVERED
- SURVEYED IN
- REFERENCED

PREVIOUS RENEWALS / SURVEYS, ETC.

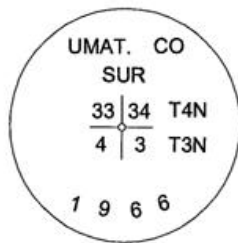
ORIGINALLY SURVEYED UNDER CONTRACT #91 IN 1860 BY HAFT. HE SET POST IN MOUND. IN 1940 GOULD DID A DEPENDENT RESURVEY & SET 2 1/2" BRASS CAP ON IRON PIPE. IN 1966 HARRIS SET A 2 1/2" BRASS CAP IN A SURVEY FOR UMATILLA COUNTY CO. #C-20-B.

MONUMENTS AND ACCESSORIES FOUND: CONDITION AND SOURCE

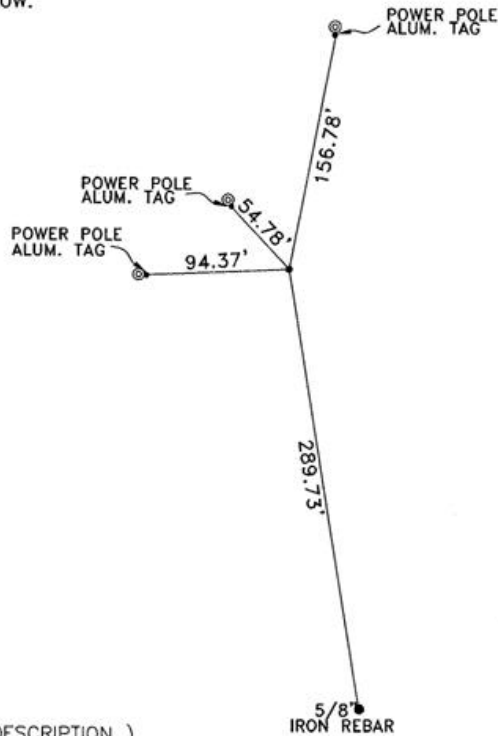
FOUND 2 1/2" BRASS CAP STAMPED AS BELOW.

SKETCH

MONUMENT DETAIL



NAD 83/91
OREGON STATE PLANE
INTERNATIONAL FEET
771380.2118
8473859.8256



MONUMENT SET (PROCEDURES AND DESCRIPTION)

NA

NEW ACCESSORIES FROM WHICH

AN ALUMINUM TAG STAMPED #951 ON A POWER POLE BEARS S 87°33'44" W 94.37 FEET.
AN ALUMINUM TAG STAMPED #951 ON A POWER POLE BEARS N 43°14'01" W 54.78 FEET.
AN ALUMINUM TAG STAMPED #951 ON A POWER POLE BEARS N 10°56'39" E 156.78 FEET.
A 5/8"X30" IRON REBAR WITH PLASTIC CAP #951 BEARS S 9°32'58" E 289.73 FEET.

LOCATION AND COMMENTS

CENTER LINE OF A COUNTRY
ROAD 1.75 MILES SOUTH
OF I-84.

COMPASS DEC.

FIRM/AGENCY

EDWARDS SURVEYING
P.O. BOX 763
HERMISTON, OREGON 97838

PARTY CHIEF

CURTIS FAVOREL

NOTES

WITNESS

RICK SMITH

SURVEYOR'S SEAL

REGISTERED
PROFESSIONAL
LAND SURVEYOR

G. Dennis Edwards

OREGON
JULY 16, 1971
G. DENNIS EDWARDS
9 5 1

RENEWS 12/31/2003

03-58-9