

OREGON CORNER RESTORATION FORM

SECTION 33 TOWNSHIP 4 NORTH RANGE 27 EAST

X-13

COUNTY : UMATILLA DATE 12/02

CORNER DESIGNATION

E 1/4 CORNER

CONDITION REPORT ONLY

NOT FOUND

RENEWED

UNCOVERED

SURVEYED IN

REFERENCED

PREVIOUS RENEWALS / SURVEYS, ETC.

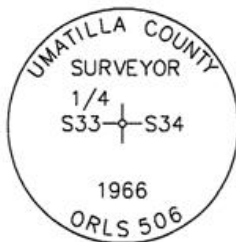
ORIGINALLY SURVEYED UNDER CONTRACT #209 IN 1874 BY WALDEN.

UMATILLA COUNTY 1969, THOMPSON CS #H-25-AX.

MONUMENTS AND ACCESSORIES FOUND: CONDITION AND SOURCE

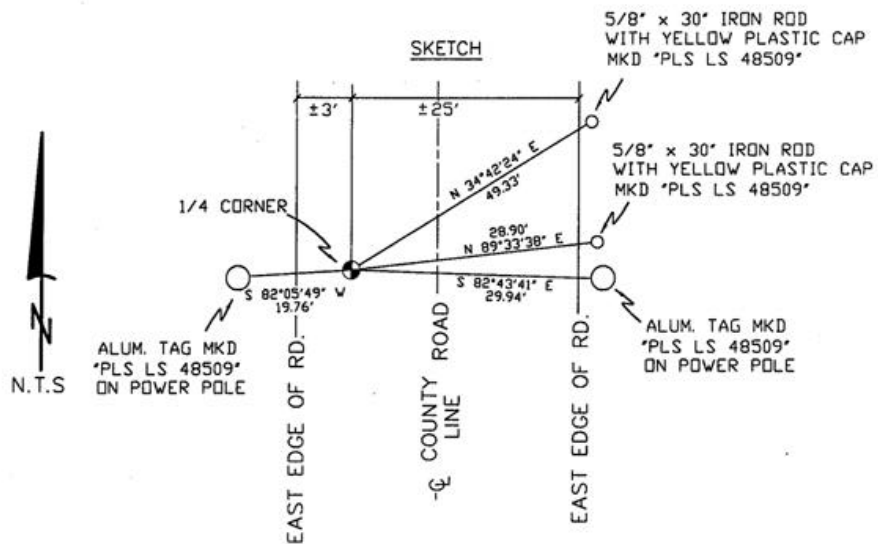
A 2 1/2" BRASS CAP.

MONUMENT DETAIL



NAD 83/91
OREGON STATE PLANE
INTERNATIONAL FEET

774022.5099
8473804.8020



MONUMENT SET (PROCEDURES AND DESCRIPTION)

NEW ACCESSORIES FROM WHICH

A 5/8" x 30" IRON ROD WITH A YELLOW PLASTIC CAP MKD "PLS LS 48509" LIES N 34°42'24" E, 49.33 FEET.
A 5/8" x 30" IRON ROD WITH A YELLOW PLASTIC CAP MKD "PLS LS 48509" LIES N 89°33'38" E, 28.90 FEET.
AN ALUMINUM TAG "PLS LS 48509" ON A POWER POLE LIES S 82°43'41" E, 29.94 FEET.
AN ALUMINUM TAG "PLS LS 48509" ON A POWER POLE LIES S 82°05'49" W, 19.76 FEET.

LOCATION AND COMMENTS

FROM INTERSECTION OF COUNTY LINE RD. AND FRONTAGE RD. GO SOUTH 1.2 MILES TO CORNER, CORNER FALLS ±3' WEST OF EDGE OF COUNTY LINE RD. AND IS ±2' BELOW ROAD SURFACE.

COMPASS DEC.

FIRM/AGENCY
PRIMM LAND SURVEYING
P.O. BOX 1322
HERMISTON, OREGON 97838

PARTY CHIEF
KEITH P. PRIMM

NOTES

WITNESS
BRIT L. PRIMM

SURVEYOR'S SEAL

REGISTERED
PROFESSIONAL
LAND SURVEYOR

Brit L. Primm
OREGON
JULY 13, 1999
BRIT L. PRIMM
48509

EXPIRATION DATE: 12/31/04

03-49-9