

# OREGON CORNER RESTORATION FORM

SECTION 25 TOWNSHIP 4 NORTH RANGE 27 EAST

T-25

COUNTY : UMATILLA DATE 12/02

CORNER DESIGNATION

E 1/4 CORNER

X CONDITION REPORT ONLY

- NOT FOUND
- RENEWED
- UNCOVERED
- SURVEYED IN
- REFERENCED

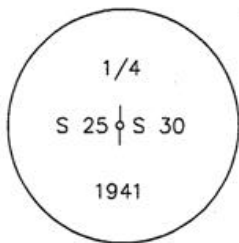
PREVIOUS RENEWALS / SURVEYS, ETC.

ORIGINALLY SURVEYED UNDER CONTRACT #93 IN 1860 BY HAFT.  
RESURVEYED BY WALDEN UNDER CONTRACT #209.  
GOULD 1941 DEPENDENT RE-SURVEY SET A 3 1/2" BRASS CAP.

MONUMENTS AND ACCESSORIES FOUND: CONDITION AND SOURCE

A 3 1/2" BRASS CAP.

MONUMENT DETAIL

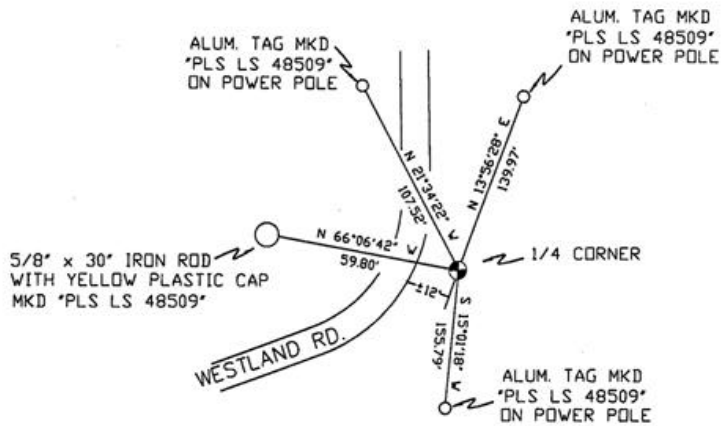


NAD 83/91  
OREGON STATE PLANE  
INTERNATIONAL FEET

779524.8728  
8489659.4540



SKETCH



MONUMENT SET ( PROCEDURES AND DESCRIPTION )

NEW ACCESSORIES FROM WHICH

A 5/8" x 30" IRON ROD WITH A YELLOW PLASTIC CAP MKD "PLS LS 48509" LIES N 66°06'42" W, 59.80 FEET.  
AN ALUMINUM TAG "PLS LS 48509" ON A POWER POLE LIES N 13°56'28" E, 139.97 FEET.  
AN ALUMINUM TAG "PLS LS 48509" ON A POWER POLE LIES N 21°34'22" W, 107.52 FEET.  
AN ALUMINUM TAG "PLS LS 48509" ON A POWER POLE LIES S 15°01'18" W, 155.79 FEET.

LOCATION AND COMMENTS

FROM INTERSECTION OF WESTLAND RD. AND WESTPORT LANE GO SOUTH 0.05 MILES TO CORNER.

COMPASS DEC.

FIRM/AGENCY  
PRIMM LAND SURVEYING  
P.O. BOX 1322  
HERMISTON, OREGON 97838

PARTY CHIEF  
KEITH P. PRIMM

NOTES

WITNESS  
BRIT L. PRIMM

SURVEYOR'S SEAL

REGISTERED  
PROFESSIONAL  
LAND SURVEYOR

*Brit L. Primm*  
OREGON  
JULY 13, 1999  
BRIT L. PRIMM  
48509

EXPIRATION DATE: 12/31/04

03-49-9