

# OREGON CORNER RESTORATION FORM

SECTION 25 TOWNSHIP 4 NORTH RANGE 27 EAST

T-23

COUNTY : UMATILLA DATE 12/02

CORNER DESIGNATION

CTR. 1/4 CORNER

CONDITION REPORT ONLY

NOT FOUND

RENEWED

UNCOVERED

SURVEYED IN

REFERENCED

PREVIOUS RENEWALS / SURVEYS, ETC.

ORIGINALLY SURVEYED UNDER CONTRACT #209 IN 1874 BY WALDEN.  
STAEBLER 1981, CS #S-141.

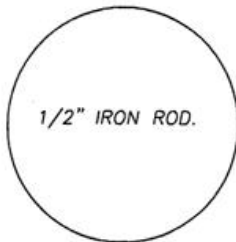
MONUMENTS AND ACCESSORIES FOUND: CONDITION AND SOURCE

A 1/2" IRON ROD.

A 1/2" IRON ROD WITH A YELLOW PLASTIC CAP MKD "#951" LIES S 0°13'51" W, 60.06 FEET.

A 1/2" IRON ROD LIES N 0°13'33" E, 299.70 FEET.

MONUMENT DETAIL

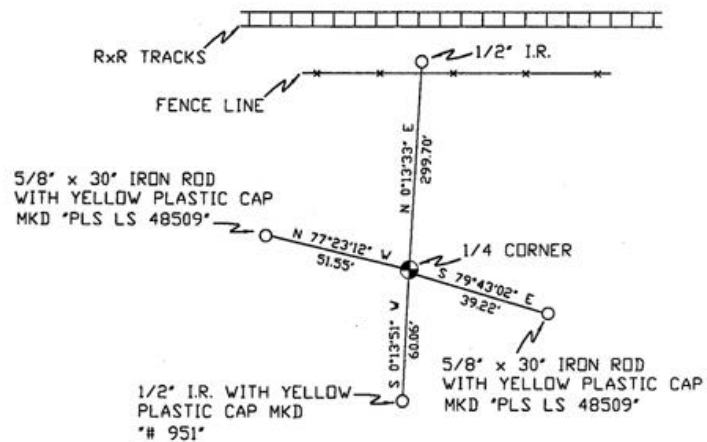


NAD 83/91  
OREGON STATE PLANE  
INTERNATIONAL FEET

779484.0041  
8487012.6496



SKETCH



MONUMENT SET ( PROCEDURES AND DESCRIPTION )

NEW ACCESSORIES FROM WHICH

A 5/8" x 30" IRON ROD WITH A YELLOW PLASTIC CAP MKD "PLS LS 48509" LIES N 77°23'12" W, 51.55 FEET.

A 5/8" x 30" IRON ROD WITH A YELLOW PLASTIC CAP MKD "PLS LS 48509" LIES S 79°43'02" E, 39.22 FEET.

LOCATION AND COMMENTS

FROM INTERSECTION OF R&R TRACKS  
AND WESTLAND RD. GO WEST 0.5 MILES  
AND THEN SOUTH +/- 300 FEET TO  
CORNER.

COMPASS DEC.

FIRM/AGENCY

PRIMM LAND SURVEYING  
P.O. BOX 1322  
HERMISTON, OREGON 97838

PARTY CHIEF

KEITH P. PRIMM

NOTES

WITNESS

BRIT L. PRIMM

SURVEYOR'S SEAL

REGISTERED  
PROFESSIONAL  
LAND SURVEYOR

*Brit L. Primm*  
OREGON  
JULY 13, 1999  
BRIT L. PRIMM  
48509

EXPIRATION DATE: 12/31/04

03-49-9