

OREGON CORNER RESTORATION FORM

Section: 36  
Township: 3 North  
Range: 34 East of the Willamette Meridian  
County: Umatilla  
Date: 05/13/02

Corner Indexing Information: Township 3N Range 34E Corner Code Z-25 (Willamette Meridian)

Additional Identifier: (e.g. BLM designation for the corner, street intersection, plat name, block, lot, etc.)

Southeast corner Section 36.

Oregon Plane Coordinates: N: 743226.966 E: 8713704.254

Zone: North Order: second Datum: NAD83-91 Convergence: 1°25'11.6" Scale Factor: 0.99985635

Previous Renewals/Surveys, etc.:

Corner was originally set by Odell and Lewis in 1866 as a post, mound and pits, per contract no. 114.

In 1887, Currin set a basalt stone 16"x16"x12", and raised a mound.

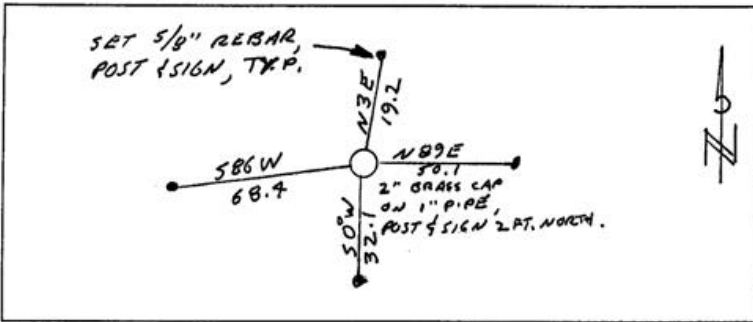
In 1974 Krumbein found a brass cap (C.S. I-171-A.)

Monument(s) & Accessories Found (Condition & Source):

Found a 2" brass cap on 1" pipe in mound of stone, apparent Redfield corner.

Monument Set (Procedures & Description):

Monument Detail:



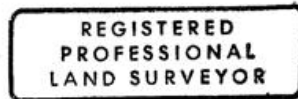
Location & Comments:

Compass Declination:

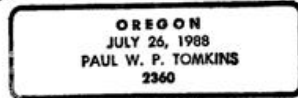
19° East

Surveyor's Seal

Firm/Agency: Tomkins Land Surveying, Inc.  
20 E. Poplar, Suite 204  
Walla Walla WA 99362



*Paul W. Tomkins*



*renews 6/30/09  
2/11/03*

Party Chief: PWPT

Notes:

Witness:

RECEIVED BY

Umatilla County Surveyor

Date 2-03

Rec'd By KR

No. 03-26-9