

OREGON CORNER RESTORATION FORM

Section 36 Township 3N
County Umatilla Date: 05/05/09

Range 29E

Corner Designation: 3N29V25

Corner common to sections 25,36, T3NR29E, 30,31, T3NR30E.

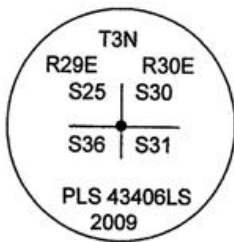
_____ Condition Report Only
_____ Not Found
_____ X _____ Remonumented
_____ Unrecorded
_____ Surveyed In
_____ Referenced Out

Previous Renewals / Surveys, etc.

Originally Surveyed by David P. Thompson in 1859. He set a post in a mound of earth.

Monuments and Accessories Found: (Condition and Source)

Diagram



NAD 83/91
OREGON STATE PLANE NORTH
INTERNATIONAL FEET

N746016.91
E8554200.43

LAT - 45° 42' 16.81719" N
LON - 119° 07' 18.21948" W

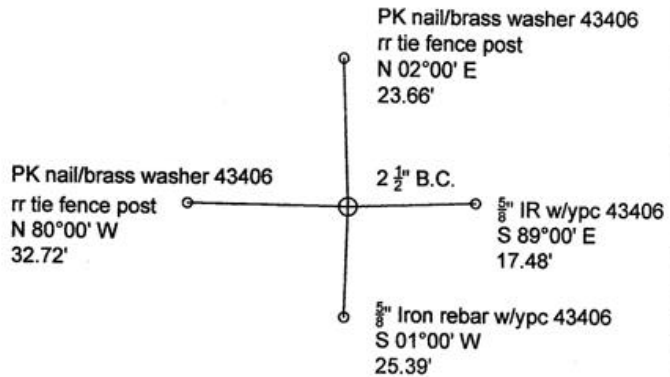
Monument (s) Set (Procedures and Description)

Set A 1"x30" flared galvanized iron pipe with a 2 1/2" B.C. by best evidence at a 4-way fence intersection, north,south,east,west.

References Set:

- A 5/8" x 30" Iron rebar w/ypc #43406 lies S 89°00' E, 17.48'
- A 5/8" x 30" Iron rebar w/ypc #43406 lies S 01°00' W, 25.39'.
- A PK nail and Brass washer #43406 on a railroad tie fence post lies N 80°00' W, 32.72'.
- A PK nail and Brass washer #43406 on a railroad tie fence post lies N 02°00' E, 23.66'.

Sketch



Location and Comments

The corner is 3 miles south of the intersection of Coppinger Lane and Highway 320, and it is 1 mile north of the Umatilla river.

Compass Declination
17° E

Surveyors Seal

REGISTERED
PROFESSIONAL
LAND SURVEYOR

Robert D. English

OREGON
JANUARY 11, 2005
ROBERT DOUGLAS ENGLISH
43406LS

RECEIVED BY:

Date: 1-11
Rec'd By: KE
No. 11-19-R

Firm / Agency

Survey One, LLC.
P.O. Box 382
Pendleton, OR 97801
(541) 276-2055

RENEWAL DATE: 12/31/09