

OREGON CORNER RESTORATION FORM

Section 13 Township 3N Range 29E
County Umatilla Date: 08/18/09

Corner Designation: 3N29N25

Corner common to section 13,24, T3NR29E, and section 18,19, T3NR30E.

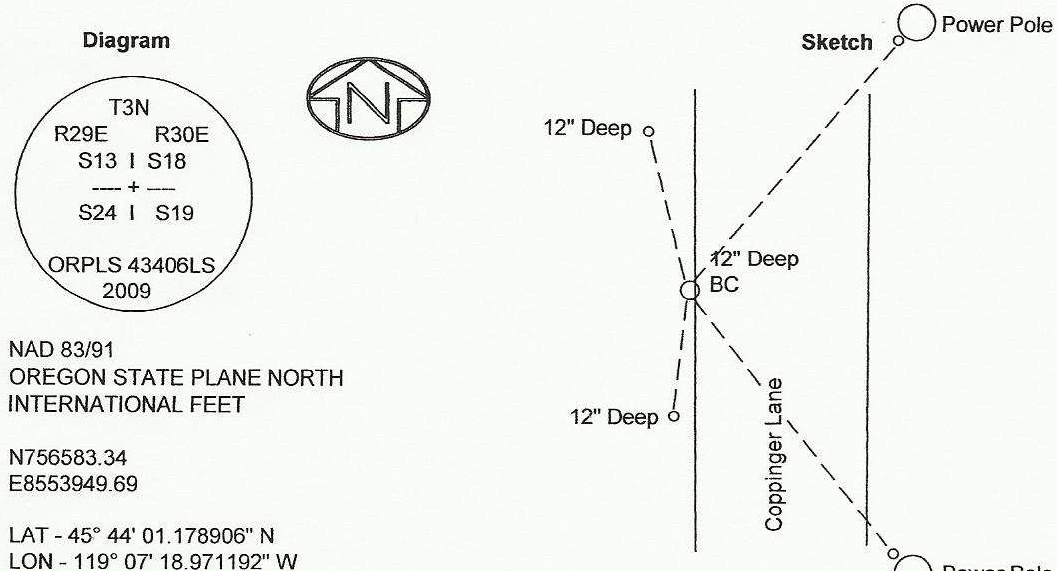
- Condition Report Only
- Not Found
- Remonumented
- Unrecorded
- Surveyed In
- Referenced Out

Previous Renewals / Surveys, etc.

Originally Surveyed by David P. Thompson in 1859. He set a post in a mound of earth.

Monuments and Accessories Found: (Condition and Source)

None



NAD 83/91
OREGON STATE PLANE NORTH
INTERNATIONAL FEET

N756583.34
E8553949.69

LAT - 45° 44' 01.178906" N
LON - 119° 07' 18.971192" W

Monument (s) Set (Procedures and Description)

Set A 1"x30" flared galvanized iron pipe with a 2 1/2" B.C. by best fit between the northeast corner of the township and the northeast corner of S 25.

References Set:

- A 5/8" x 30" Iron rebar w/ypc #43406 lies N 78°30' E, 140.00'
- A 5/8" x 30" Iron rebar w/ypc #43406 lies S 8°00' E, 181.10'.
- A 5/8" x 30" Iron rebar w/ypc #43406 lies S 1°45' W, 41.28'.
- A 5/8" X30" Iron rebar w/ypc #43406 lies N 3°00' W, 44.83'.

Location and Comments

The corner is 1 mile south of the intersection of Coppinger Lane and Highway 320.

Compass Declination

17° E

Surveyors Seal

REGISTERED
PROFESSIONAL
LAND SURVEYOR

Robert D. English
OREGON
JANUARY 11, 2005
ROBERT DOUGLAS ENGLISH
43406LS

RECEIVED BY:

Date: 8-09
Rec'd By: RK
No. 09-121-R

Firm / Agency

Survey One, LLC.
P.O. Box 382
Pendleton, OR 97801
(541) 276-2055

RENEWAL DATE: 12/31/09