

OREGON CORNER RESTORATION FORM

Section 16 Township 3N Range 29E
 County Umatilla Date: May 21, 1998

Corner Designation: 3N29N13

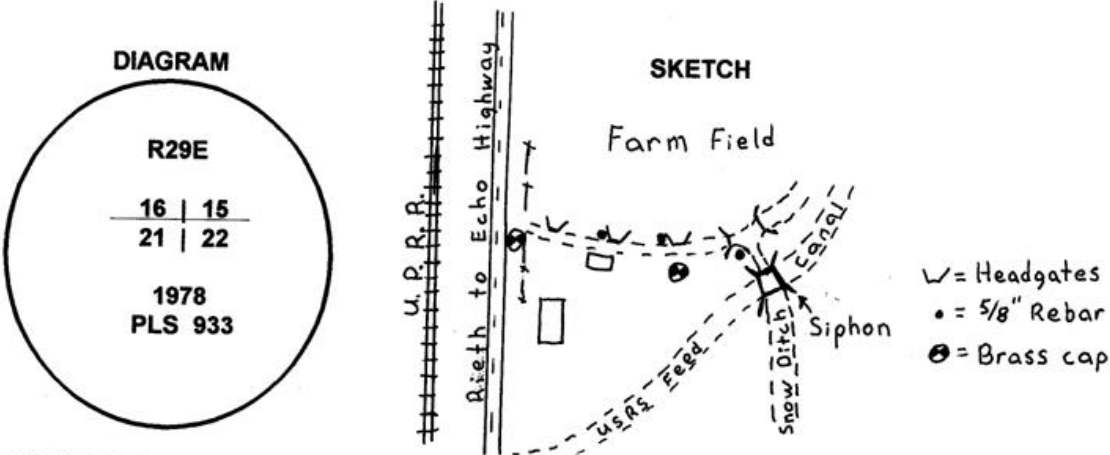
Condition Report Only
 Not found
 Remonumented
 Unrecorded
 Surveyed in
 x Referenced out

Section corner common to sections 15, 16, 21, and 22,
 T3N, R29E, W.M.

Previous Renewals / Surveys, etc.

Corner originally established by Gates in 1859 under contract No. 84 was a post in a mound of earth with charcoal. Aubrey Perry found a basalt rock in 1919 in the survey recorded in book 2, Page 308 of the record of private surveys. PLS933 set a brass cap in place of a rock in survey No. Q-1056-B and a brass capped witness monument bearing S89°13'01"W, 320.00 feet.

Monument and Accessories found: (condition and source)
 Found the monuments set by PLS 933 in good condition.



MONUMENT (S) AND ACCESSORIES SET (Procedures and Description)
 References were set using a total station with a staff compass bearing. The witness corner set by PLS933 was surveyed to using GPS and was not visible from the corner.

- REFERENCES SET:**
- A 5/8" x 24" rebar with a 2 1/4" red plastic cap stamped HADDOCK SURVEYING, ORLS 852 and WALS 13922 bears N63°08'09"E, 85.25 feet in the corner of a concrete headgate.
 - A 5/8" x 24" rebar with a 2 1/4" red plastic cap stamped HADDOCK SURVEYING, ORLS 852 and WALS 13922 bears N61°40'00"E, 54.42 feet in the corner of a concrete headgate.
 - A 5/8" x 24" rebar with a 2 1/4" red plastic cap stamped HADDOCK SURVEYING, ORLS 852 and WALS 13922 bears N72°52'36"W, 45.76 feet in the corner of a concrete headgate.

Location and comments

Compass Declination
 20°

Surveyors Seal

RECEIVED BY:
 Umatilla County Surveyor
 Date: 8-98
 Rec'd By: KK
 No. 98-155-C

Firm / Agency
 Haddock Surveying
 Address
 P.O. Box 1574
 Pendleton, Or. 97801
 Party Chief
 Stephen K, Haddock

REGISTERED
 PROFESSIONAL
 LAND SURVEYOR

David L. Haddock

OREGON
 JULY 12, 1968
 DAVID L. HADDOCK
 852

RECEIVED BY
 Umatilla County Surveyor
 Date _____
 Rec'd By _____
 No. _____