

GPS CONTROL STATION

OREGON STATE PLANE, NORTH ZONE

STATION NAME: 3N29N11 GEODETIC COORDINATE: NAD 83(91)

SECTION: SW COR S16
T. 3N., R. 29 E., W. M.
UMATILLA COUNTY
OREGONLAT: 45°44'0.45065" N
LONG: 119°11'39.21433" WSTATE PLANE CO-ORDINATES,
NAD 83-91, INT. FT. :*David L. Haddock*N: 756204.516
E: 8535511.581
THETA: 0°55'33.73"
SCALE FACTOR: 0.99994316
ELEV: 633
ELEV. DATUM: NGVD29

NORTH WITNESS MONUMENT

LAT: 45°44'1.46284" N
LONG: 119°11'41.43516" WSTATE PLANE CO-ORDINATES,
NAD 83-91, INT. FT. :N: 756304.478
E: 8535352.422
THETA: 0°55'32.16"
SCALE FACTOR: 0.99994321
ELEV: 639
ELEV. DATUM: NGVD29

SOUTH WITNESS MONUMENT

LAT: 45°43'59.58134" N
LONG: 119°11'41.95634" WSTATE PLANE CO-ORDINATES,
NAD 83-91, INT. FT. :N: 756113.335
E: 8535318.538
THETA: 0°55'31.79"
SCALE FACTOR: 0.99994312
ELEV: 640
ELEV. DATUM: NGVD29FIRM: HADDOCK SURVEYING
P. O. BOX 1574
PENDLETON, OR 97801
(541) 276-2174

DATE SURVEYED: March, 1998

SURVEYOR: DAVID L. HADDOCK
PLS 852

LOCATION: From main street in the City of Echo go southwest on Oregon Highway 320 to the intersection with Pedro Lane. Go southwest on Pedro Lane to the Westland Main canal and go west along the main canal approximately 1/2 mile to the entrance road to the feed lot belonging to the Spike Ranches. The corner falls in the river on the east side of the feed lot. The witness caps with the coordinates shown above are approximately 10 feet east of the fence on the east side of the feed lot. There is no monument set at the current corner location.

STATION: Station is in the river and no monument was set. Two witness monuments were set and the coordinates for those points are as shown above. The witness monuments are 2 1/4 inch brass discs on galvanized iron pipes set flush with the surface of the ground.

OREGON CORNER RESTORATION FORM

Section 16 Township 3N Range 29E
 County Umatilla Date: April 1, 1998

Corner Designation: 3N29N11

Condition Report Only
 Not found

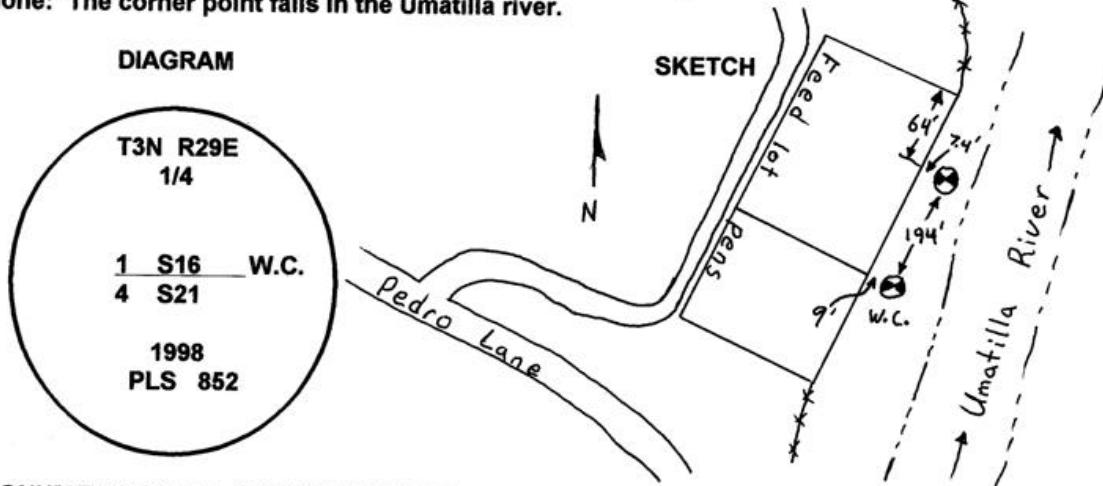
Remonumented
 Unrecorded
 Surveyed in
 Referenced out

1/4 corner common to sections 16 and 21,
 T3N, R29E, W.M.

Previous Renewals / Surveys, etc.

Corner originally established by Gates in 1859 under contract No. 84 was a post with a 5" balm bearing N25°E, 17 links dist. and a 4" willow bearing S1°W 8 links dist. as a witness corner 137 links north of the true corner point. This point was not set at the mid point of the line east to west Aubrey Perry set a rock with a stake in 1919 in a survey recorded in book 2, page 308 of the record of private surveys. PLS933 found and accepted a wagon axle (not of record) for this corner in Survey S-158-C and set a brass cap for the monument.

Monument and Accessories found: (condition and source)
 None: The corner point falls in the Umatilla river.



MONUMENT (S) AND ACCESSORIES SET (Procedures and Description)

Set a 2 1/4 inch brass cap on a 1 1/8" x 30" galvanized iron pipe for a witness monument N56°57'00"W, 187.95 feet.
 Set a 2 1/4 inch brass cap on a 1 1/8" x 30" galvanized iron pipe for a witness monument S65°38'07"W, 213.49 feet.

The corner position was computed by single proportionate methods using the GLO record of 40.00 chains and 40.60 chains.

REFERENCES SET:

Location and comments

Compass Declination

Surveyors Seal

RECEIVED BY:

Umatilla County Surveyor

Date: 8-98

Rec'd By: KR

No. 98-155-C

Firm / Agency

Haddock Surveying

Address

P.O. Box 1574

Pendleton, Or. 97801

Party Chief

Stephen K, Haddock

REGISTERED
 PROFESSIONAL
 LAND SURVEYOR

David L. Haddock

OREGON
 JULY 12, 1988
 DAVID L. HADDOCK
 852