

GPS CONTROL STATION

OREGON STATE PLANE, NORTH ZONE

STATION NAME: 3N29J11 GEODETIC COORDINATE: NAD 83(91)

SECTION: S 1/4 S9 LAT: 45°44'52.70887" N
T. 3N., R. 29 E., W. M. LONG: 119°11'38.92273" W
UMATILLA COUNTY
OREGON

STATE PLANE CO-ORDINATES,
NAD 83-91, INT. FT. :

DATE SURVEYED: March, 1998

N: 761497.230

SURVEYOR: DAVID L. HADDOCK
PLS 852

E: 8535446.712

THETA: 0°55'33.94"

SCALE FACTOR: 0.99994670

ELEV: 721

FIRM: HADDOCK SURVEYING
P. O. BOX 1574
PENDLETON, OR 97801
(541) 276-2174

ELEV. DATUM: NGVD29

HORIZONTAL ORDER: SECOND ORDER,
CLASS I

LOCATION: At the City of Echo Cemetery the corner is approximately 30 feet north of the tree line marking the original cemetery line and approximately 10 feet south of the existing paved cemetery road. The cap lies 6" below the surface and is in line with the overhead power line and the trees lining the west edge of the original cemetery. There are two caps at this location and the filed corner certificate should be consulted when using this corner. The coordinates shown on this form are for the cap stamped 1998, PLS852.

STATION: Station is a 2 1/4 inch brass cap on a galvanized iron pipe approximately 6 inches below the surface. The cap has a collar of stone coal and broken glass approximately 2 inches below the actual cap.

REGISTERED
PROFESSIONAL
LAND SURVEYOR

David L. Haddock

OREGON
JULY 12, 1998
DAVID L. HADDOCK
852

OREGON CORNER RESTORATION FORM

Section 9 Township 3N Range 29E
 County Umatilla Date: May 4, 1998

Corner Designation: **3N29J11**

1/4 corner common to sections 9 and 16,
 T3N, R29E, W.M.

Condition Report Only

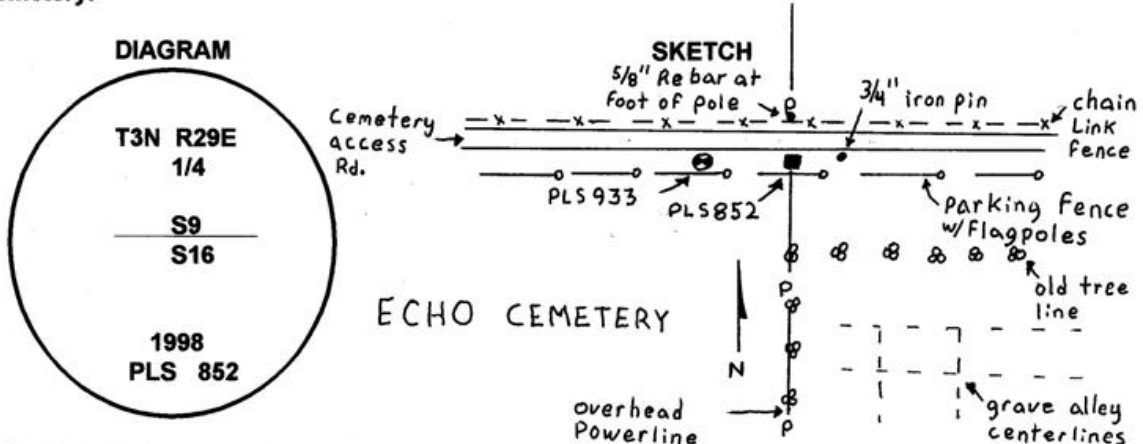
Not found
 Remonumented
 Unrecorded
 Surveyed in
 Referenced out

Previous Renewals / Surveys, etc.

Corner originally established by Gates in 1859 under contract No. 84 was a post in a mound of earth. The railroad map of 1916 calls the monument a "rock". PLS 933 set a brass cap for this corner in survey S-158-C at the position of a found wagon axle which was not of record.

Monument and Accessories found: (condition and source)

Found the brass cap set by PLS 933, unmarked, 6 inches below the surface. Found a 6"x9"x12" piece of stone coal surrounded by broken pottery and glass along side a rotten piece of wood at the position identified from the alley centerlines in the City of Echo cemetery.



MONUMENT (S) AND ACCESSORIES SET (Procedures and Description)

Set a 2 1/4 inch brass cap on a 1 1/8" x 30" galvanized iron pipe 6 inches below the surface. Made a collar around the cap out of the coal, pottery, and glass about 2 inches below the cap. The coal disintegrated when moved.

REFERENCES SET:

- A brass capped monument set by PLS 933 lies S84°23'21"W, 45.20 feet 6 inches below the surface of the ground.
- A 5/8" x 24" rebar with a 1 1/8" red plastic cap stamped ORLS 852, and WALS 13922 bears N4°09'20"W, 26.37 feet at the foot of a power pole.
- A found 3/4" iron pin 2 inches below the surface bears S88°18'42"E, 16.67 feet.

Location and comments

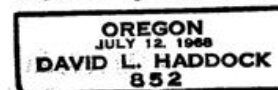
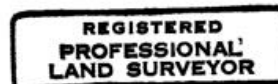
Compass Declination

Surveyors Seal

RECEIVED BY:

Umatilla County Surveyor
 Date: 8-98
 Rec'd By: KK
 No. 98-155-C

Firm / Agency
 Haddock Surveying
 Address
 P.O. Box 1574
 Pendleton, Or. 97801
 Party Chief
 Stephen K, Haddock



RECEIVED BY
 Umatilla County Surveyor
 Date _____
 Rec'd By _____