

OREGON CORNER RESTORATION FORM

Section 5,6
County Umatilla

Township 3N
Date: 08/12/10

Range 29E

Corner Designation: 3N29C5

Corner common to sections 5,6 T3NR29E.

- Condition Report Only
- Not Found
- Remonumented
- Unrecorded
- Surveyed In
- Referenced Out

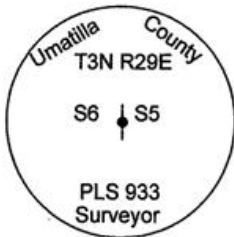
Previous Renewals / Surveys, etc.

Originally Surveyed by Gates. He set a post in a mound of earth in 1859. Krumbein set a 2" brass cap in a steel pipe.

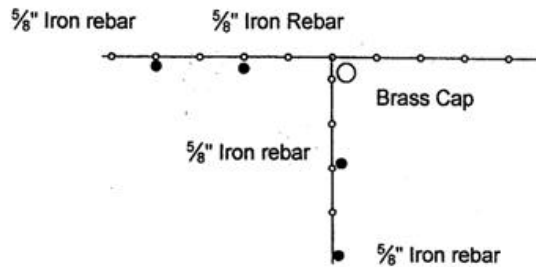
Monuments and Accessories Found: (Condition and Source)

2" Brass cap, in good condition, approximately 10" out of ground.

Diagram



Sketch



NAD 83/91
OREGON STATE PLANE NORTH
INTERNATIONAL FEET

N769271.55
E8527300.79

LAT - 45° 46' 10.73342" N
LON - 119° 13' 32.04649" W

Monument (s) Set (Procedures and Description)

None.

References Set:

- A 5/8" x 30" Iron rebar w/rpc #43406 lies N 87°57' W, 38.67'.
- A 5/8" x 30" Iron rebar w/rpc #43406 lies N 78° W, 13.17'.
- A 5/8" x 30" Iron rebar w/rpc #43406 lies S 0°50' W, 23.32'.
- A 5/8" x 30" Iron rebar w/rpc #43406 lies S 0°20' W, 51.91'.

Location and Comments

Corner is at a fence intersection
N. of a farm road that parallels I84.
Approx 1/2 mile East of Echo Meadows Rd.

Compass Declination

17° E

Surveyors Seal

REGISTERED
PROFESSIONAL
LAND SURVEYOR

Robert D. English
OREGON
JANUARY II, 2005
ROBERT DOUGLAS ENGLISH
43406LS

RECEIVED BY:

Date: 8-10
Rec'd By: *SK*
No. 10-133-R

Firm / Agency

Survey One, LLC.
P.O. Box 382
Pendleton, OR 97801
(541) 276-2055

RENEWAL DATE: 12/31/11