

OREGON CORNER RESTORATION FORM

Section 1,2
County Umatilla

Township 3N
Date: 12/31/08

Range 29E

Corner Designation: 3N29A21

Section corner common to sections 35,36, T4NR29E, 1,2, T3NR29E.

- Condition Report Only
- Not Found
- Remonumented
- Unrecorded
- Surveyed In
- Referenced Out

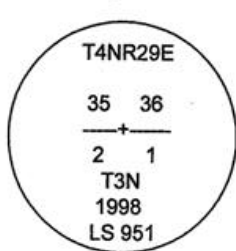
Previous Renewals / Surveys, etc.

Originally Surveyed by Gates in 1859. He set a post in a mound of earth.
In 1998 Edwards set a 1"x30" Iron pipe with a 2 3/8" B.C. by single proportion.
In 2001 Primm found a 2 3/8" B.C.
In 2002 Haddock found a 2 3/8" B.C.

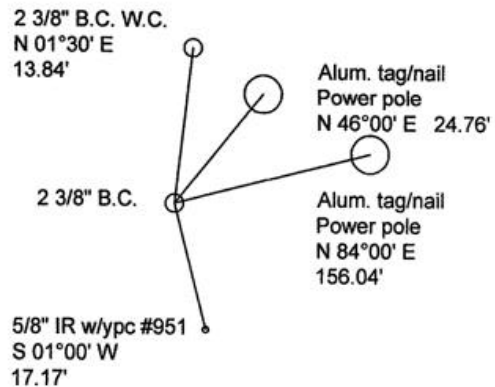
Monuments and Accessories Found: (Condition and Source)

A 2 3/8" B.C.
A 2 3/8" B.C. W.C. lies N 01°30' E, 13.84'.
An aluminum tag #951 and nail on a power pole lies N 46°00' E, 24.76'.
An aluminum tag #951 and nail on a power pole lies N 84°00' E, 156.04'.
A 5/8" IR no cap, lies S 01°00' W, 17.17'.

Diagram



Sketch



NAD 83/91
OREGON STATE PLANE NORTH
INTERNATIONAL FEET

N772422.58
E8548347.50

LAT - 45° 46' 38.45974" N LON - 119° 08' 34.43311" W

Monument (s) Set (Procedures and Description)

None.

References Set:

None.

Location and Comments

The corner lies approx. 2.5 miles east from the intersection of S. Ash Rd. and Stage Gulch Rd. in Stanfield.

Compass Declination
17° E

Surveyors Seal

RECEIVED BY:

Date: 1-11
Rec'd By: KK
No. 11-08-R

Firm / Agency

Survey One, LLC.
P.O. Box 382
Pendleton, OR 97801
(541) 276-2055

REGISTERED
PROFESSIONAL
LAND SURVEYOR

Robert D. English
OREGON
JANUARY 11, 2005
ROBERT DOUGLAS ENGLISH
43406LS

RENEWAL DATE: 12/31/09