

**OREGON CORNER RESTORATION FORM**

Section 21 Township 3N Range 28E  
 County Umatilla Date: 06-21-02

Corner Designation: 3N28R13

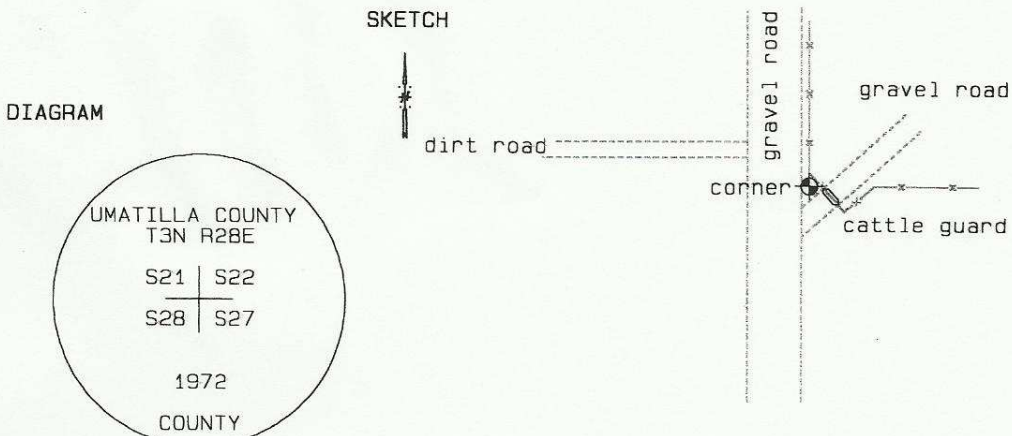
Condition Report Only  
 Not Found  
 Remonumented  
 Unrecorded  
 Surveyed In  
 Referenced Out

Previous Renewals / Surveys, etc.

Survey H-107-B records finding a stone here and setting a brass capped monument.  
 Survey 84-56-B records finding a brass capped monument here.

Monument and Accessories Found: ( condition and source )

Found a brass capped monument in good condition as shown below.



MONUMENT (S) AND ACCESSORIES SET (Procedures and Description)

None.

REFERENCES SET:

None.

Made GPS tie to TRI Station	Oregon State Plane Coord. - North Zone
Stanfield East Base.	Northing 750431.84
Latitude 45°43'07.98377" N	Easting 8505863.52
Longitude 119°18'38.36475" W	Ortho Height 682.19
NAD 83 (1991)	Ellipsoidal Height 612.62

Location and Comments

Compass Declination  
20°E

Surveyors Seal

From the junction of Highways 207 and 320, go north 0.6 miles. Follow a gravel road east 2.1 miles to the catlleguard and fence corner shown below.

REGISTERED  
PROFESSIONAL  
LAND SURVEYOR

RECEIVED BY:

Firm / Agency

*David L. Haddock*

Date: 7-02  
 Rec'd By: KK  
 No. 02-187-9

Haddock Surveying  
 P. O. Box 1574  
 Pendleton, OR 97801  
 (541) 276-2174

OREGON  
 JULY 12, 1968  
 DAVID L. HADDOCK  
 852

RENEWS 6-30-03