

OREGON CORNER RESTORATION FORM

SECTION 36 TOWNSHIP 3N RANGE 27E

z-23

COUNTY: UMATILLA DATE 7/90

CORNER DESIGNATION

South 1/4 corner

- CONDITION REPORT ONLY
- NOT FOUND
- RENEWED
- UNRECORDED
- SURVEYED IN
- REFERENCED OUT

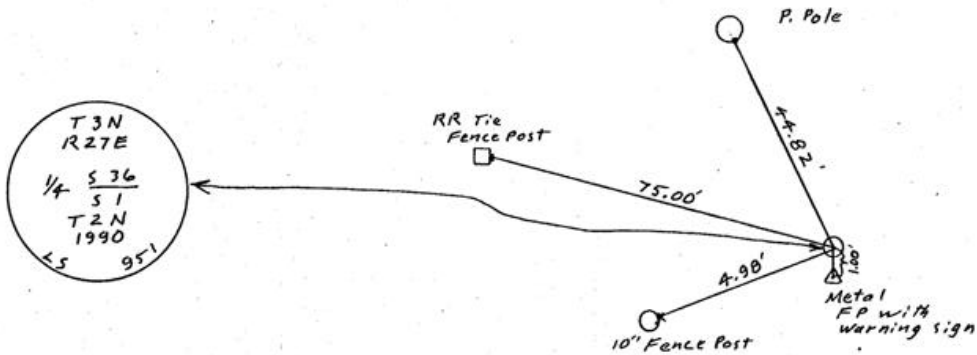
PREVIOUS RENEWALS/SURVEYS, ETC.

In May 1940 Otis Gould of the G.L.O. did a Dependent Resurvey and set a 1" iron pipe with a 2 1/2" brass cap at this corner.

MONUMENTS & ACCESSORIES FOUND: Condition and Source nothing found

MONUMENT DETAIL

SKETCH



MONUMENT SET (PROCEDURES AND DESCRIPTION)

By retracing Goulds 1940 survey I set a 1" x 30" iron pipe with a 2 3/8" brass cap, stamped as above, 0.4 foot above surface and raised a mound of sand and gravel around. See County survey # 90-53-A

NEW ACCESSORIES

From which  
 an alum. tag in power pole bears N 27° 01' 30" E 44.82 ft.  
 a steel fence post with witness sign bears South 1.0 ft.  
 an alum. tag in fence post bears S 68° 10' E 4.98 ft.  
 an alum. tag in RR tie fence post bears N 76° 04' 20" W 75.00 feet.

LOCATION & COMMENTS

From intersection of  
 Echo Hwy and Butter  
 Cr. Hwy go SWly on  
 Butter Cr. Hwy 1.5 Mile  
 to gravel rd. Go West  
 on gravel rd. .5 mile  
 to corner.

Compass Dec. 18  
 Firm Edwards Surveying  
 P.O. Box 763, Hermiston,  
 Oregon, 97838  
 PARTY CHIEF D. Edwards  
 NOTES  
 RECEIVED BY Witness J. Coppock

SURVEYOR'S SEAL

REGISTERED  
 PROFESSIONAL  
 LAND SURVEYOR

*G. Dennis Edwards*

OREGON  
 JULY 16, 1971  
 G. DENNIS EDWARDS  
 951

Umatilla County Surveyor

Date 7-90

Rec'd *JA*