

OREGON CORNER RESTORATION FORM

A-23

Section 1 Township 3N Range 27E

County Umatilla Date 4/30/97

CORNER DESIGNATION

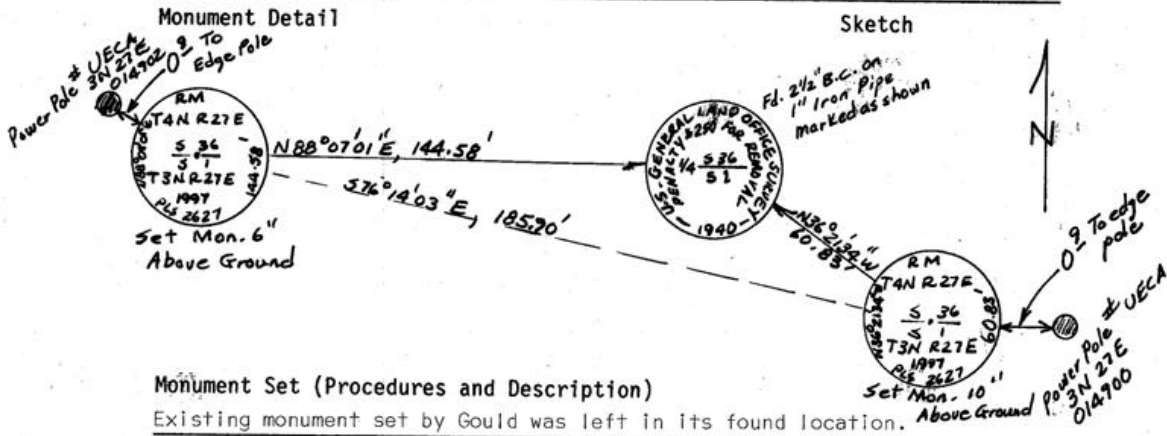
T4N R27E  
1/4 S36  
S1  
T3n R27E

- Condition Report Only
- Not Found
- Renewed
- Unrecorded
- Surveyed In
- Referenced Out

Previous Renewals/Surveys, etc. Gould set corner in 1940 GLO Survey; McKinnis used monument in a 1995 property survey for Eagle Ranch.

Monument(s) & Accessories Found: (Condition and Source)

Found 2-1/2" brass cap on 1" iron pipe in watermelon field at corner location (Gould, 1940); no accessories found. Corner is in danger of being destroyed.



Monument Set (Procedures and Description)

Existing monument set by Gould was left in its found location.

New Accessories

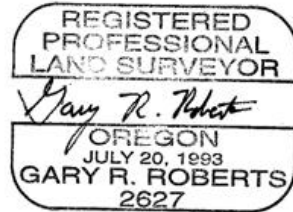
Two 2-3/8" brass caps on 1-1/2" X 30" galvanized iron pipes were set for witness corners at the locations shown on the sketch and were marked as shown. "Do Not Disturb" signs are nailed on the power poles near the monuments and are visible from the dirt track to the south.

Location & Comments

From Westland Road Interchange on I-84, go south approximately 1 mile to a dirt track leading west. Follow the dirt track about 1/2 mile. "Do Not Disturb" signs on power poles near witness corners are visible from and adjacent to the

Compass Declination  
Firm/Agency Umatilla County  
Dept. of Public Works  
Address 3920 Westgate  
Pendleton, Oregon 97801  
Party Chief Gary Roberts  
Notes Gary Roberts  
Witness Charles Good

Surveyor's Seal



RECEIVED BY  
Jmattila County Surveyor  
Date 5-97  
and by SKK  
97-90-P