

**OREGON CORNER RESTORATION FORM**

Section 36 Township 2S Range 33E  
 County Umatilla Date: 11-28-01

Corner Designation: 2S31Z25

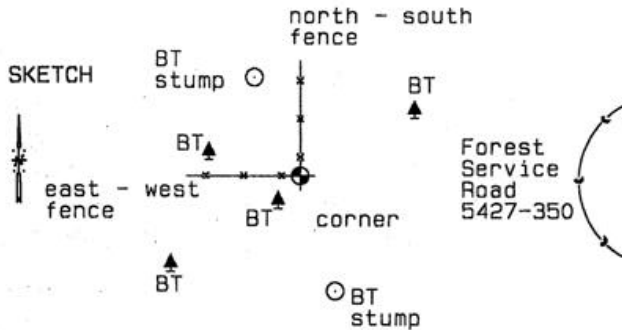
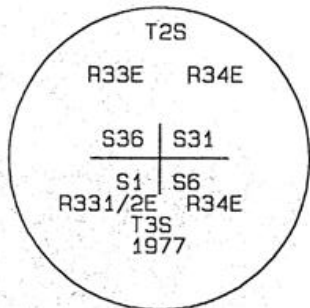
_____	Condition Report Only
_____	Not Found
_____	Remonumented
_____	Unrecorded
_____X_____	Surveyed In
_____	Referenced Out

**Previous Renewals / Surveys, etc.**  
 This corner was remonumented by Craig Wanless of the BLM in 1977 under special instructions dated May 6, 1957. He found: The original cor. of Tps. 2 and 3 S., Rs. 33, 33 1/2, and 34 E., monumented with original sandstone, 28x9x4 ins., firmly set 24 ins. in the ground, mkd. with 6 notches on N., S., E., and W. edges from which the remains of the original bearing trees: A grand fir, 24 ins. diam., bears N.60°E., 44 lks. dist., with scribe marks R34E visible on partially healed blaze. A grand fir, 37 ins. diam., bears S.17°E., 40 lks. dist., with fragmentary scribe marks visible on partially healed blaze. A larch snag, 20 ins. diam., bears S.42°W., 11 lks. dist., with scribe marks T3SR331/2ES31 visible on open blaze. A decayed pine stump, size indeterminate, bears N.25°W., 36 lks. dist. with a down pine alongside, 12 ins. diam. with scribe marks T2SR331/2ES36BT visible on open blaze. At the corner point, Set an iron post, 28 ons. long, 2 1/2 ins. diam., 24 ins. in the ground, with brass cap mkd. (see diagram) from which new bearing trees, a fir 11 ins. diam., bears S.56°W., 52 lks. dist. mkd. T3SR331/2ES1BT. A fir, 19 ins. diam., bears N.75°W., 31 1/2 lks. dist. mkd. T2SR33ES36BT.

**Monument and Accessories Found: ( condition and source )**

Found all items described by Wanless in good condition except as follows: The Grand Fir, S17E, is now a stump.

**DIAGRAM**



**MONUMENT (S) AND ACCESSORIES SET (Procedures and Description)**

None.

**REFERENCES SET:**

None.

Made GPS tie to TRI Station GRIEFY.	Oregon State Plane Coord. - North Zone
Latitude 45°20'23.72824"N	Northing 615687.97
Longitude 118°36'47.84778"W	Easting 8687173.30
NAD 83(1991)	Ortho Height 4596.37
	Ellipsoidal Height 4537.20

**Location and Comments**  
 From Pilot Rock, follow Birch Creek Road to junction FS Road 5427. Follow 5427 south to FS Road 5427-350. Follow 5427-350 to 5427-360. Follow 5427-360 to east west fence. Walk along fence 0.4 mile east to corner.

**Compass Declination**  
 20°E

**Surveyors Seal**

REGISTERED  
 PROFESSIONAL  
 LAND SURVEYOR

RECEIVED BY:

Firm / Agency

*David L. Haddock*

Date: 01-02  
 Rec'd By: KK  
 No. 02-02-R

Haddock Surveying  
 P. O. Box 1574  
 Pendleton, OR 97801  
 (541) 276-2174

OREGON  
 JULY 12, 1968  
 DAVID L. HADDOCK  
 852