

**OREGON CORNER RESTORATION FORM**

Section 22 Township 2S Range 33E  
 County Umatilla Date: April 21, 2000

Corner Designation: 2S33N15

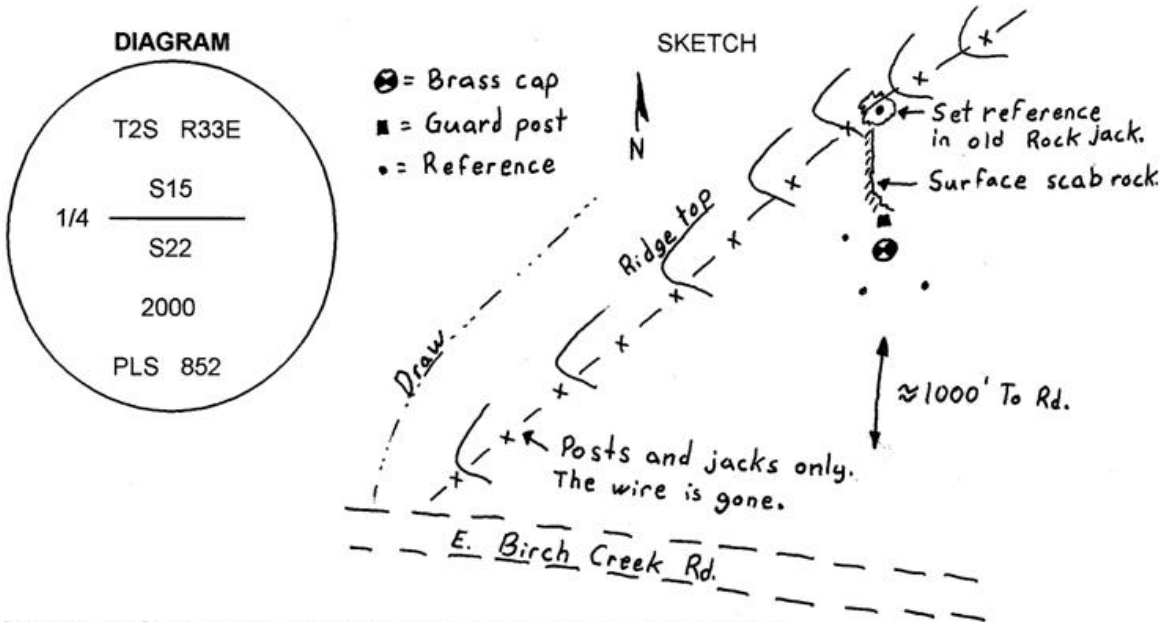
Quarter corner to sections 15 and 22, T2S, R33E,  
 W.M., Umatilla County, Oregon.

Condition Report Only  
 Not found  
 Remonumented  
 Unrecorded  
 Surveyed in  
 Referenced out

Previous Renewals / Surveys, etc.

Corner originally set by John C. Arnold under contract No. 551 dated March 19, 1890.  
 His record reads: Set basalt stone 14 x 8 x 8 ins., 10 ins. in ground, for 1/4 section corner, marked 1/4 on north face. Raised a mound of stone 1 1/2' high x 4 1/2 foot base over corner.

Monument and Accessories found: ( condition and source )  
 The original stone, firmly in place in a mound of stone, plainly chisled 1/4.



**MONUMENT (S) AND ACCESSORIES SET (Procedures and Description)**

Set a 1 1/4" x 30" Galvanized Iron Pipe with a 2 1/2" brass cap stamped as shown in the diagram above in the original mound. Buried the original stone along side. Set a 6' steel post with a county monument sign attached along side.

For references, I set four 5/8" by 24" rebars with 1.25" red plastic caps stamped ORLS 852 and WAL5 13922 as described below:

- an iron rebar bears N52°27'44"W, 30.36 feet;
- an iron rebar bears N12°21'44"E, 128.70 feet in an old rock jack;
- an iron rebar bears S68°55'02"E, 39.43 feet;
- an iron rebar bears S51°17'47"W, 29.89 feet;

The monument and references were tied using a LIECA system 300 RTK GPS.

Location and comments

Compass Declination

Surveyors Seal

RECEIVED BY:  
Umatilla County Surveyor  
 Date: 7-00  
 Rec'd By: KK  
 No. 00-156-C

Firm / Agency  
 Haddock Surveying  
 Address  
 P.O. Box 1574  
 Pendleton, Or. 97801  
 Party Chief  
 Stephen K, Haddock

